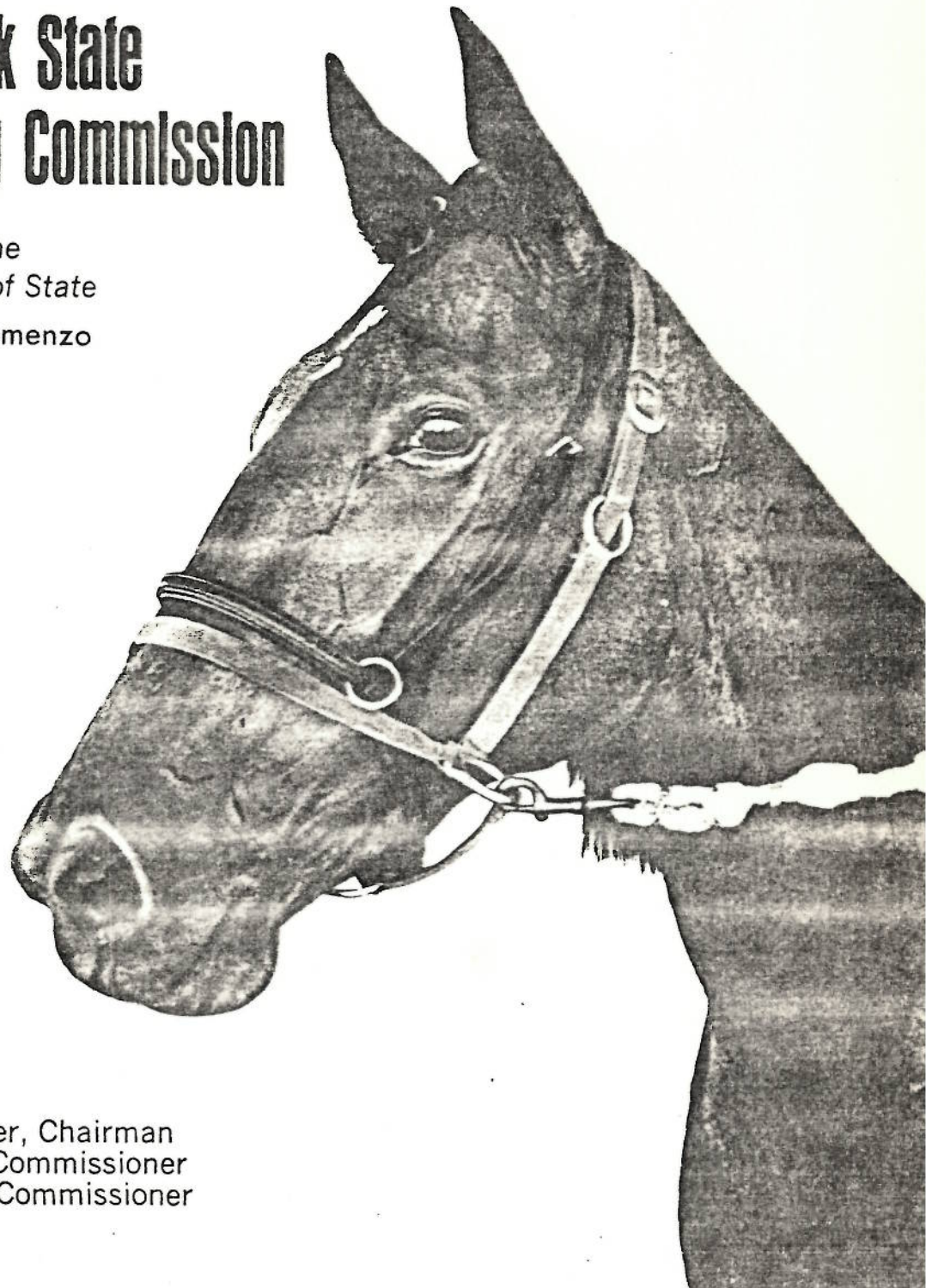


ULLMAN

1966 ANNUAL REPORT

New York State Harness Racing Commission

To The
Secretary of State
John P. Lomenzo



Robert A. Glasser, Chairman
E. Ogden Bush, Commissioner
James A. Farley, Commissioner

TABLE OF CONTENTS

	PAGE
ANNUAL REPORT	1
REVUE OF COMMISSION FUNCTION	3
CHART - HIGHLIGHTS - 1966 COMPARED TO 1965	5
CHART - SCHEDULE OF RACING DATES	6
CHART - SUMMARY OF DISPOSITION OF HANDLE, 1966.....	7
CHART - SUMMARY OF HANDLE AND ATTENDANCE, 1966 COMPARED TO 1965.....	8
CHART - SUMMARY OF AVERAGES BASED ON ATTENDANCE AND HANDLE, 1966	9
CHART - REVENUE TO STATE, CITIES AND COUNTIES	10
CHART - REV. TO CITIES AND COUNTIES FROM TAXES ON ADMISSIONS..1966 COMP. TO 1965....	11
CHART - PURSES PAID - 1966 COMPARED TO 1965	12
CHART - 5 YEAR COMPARATIVE PARI MUTUEL STATISTICS, ALL TRACKS COMBINED 1962-1966... 13	13
ALL-TIME RECORD HIGHS, HANDLE AND ATTENDANCE FOR EACH TRACK	14
NEW YORK STATE BREEDING PROGRAM	15
4-H STANDARDBRED BREEDING PROJECT	22
TWIN DOUBLE	24
SECURITY	25
RACING PENALTIES IMPOSED	35
N.Y. COMMISSION. NATIONAL PARTICIPATION	36
RACING SECTION 1966 FEATURES	39
ROOSEVELT RACEWAY FEATURES	40
YONKERS RACEWAY FEATURES	44
GOSHEN FEATURES	48
MONTICELLO RACEWAY FEATURES	50
SARATOGA RACEWAY FEATURES	54
VERNON DOWNS FEATURES	57
BATAVIA DOWNS FEATURES	60
BUFFALO RACEWAY FEATURES	62
AN AWARD	64
SUMMARY OF PARI MUTUEL OPERATIONS	65
BATAVIA DOWNS	66
BUFFALO RACEWAY	67
GOSHEN HISTORIC TRACK	68
MONTICELLO RACEWAY	69
ORANGE COUNTY AT SARATOGA	70
ROOSEVELT RACEWAY	71
SARATOGA RACEWAY	72
VERNON DOWNS	73
YONKERS RACEWAY	74
SUMMARY OF WAGERING BY POOLS 1966	75
SUMMARY OF DENOMINATIONAL WAGERING 1966	76
SUMMARY OF HANDLE BY RACE, DAILY DOUBLE, TWIN DOUBLE, EXACTA 1966	77
WINNING FAVORITES REPORT	78
TEN YEAR COMPARLSON OF WAGERING BY POOLS, ALL TRACKS COMBINED 1957-1966	79
PARI MUTUEL DATA - ALL TRACKS COMBINED - ALL YEARS	80
ACKNOWLEDGEMENTS	80



1966 Annual Report

During 1966, Robert M. Morgenthau, United States Attorney, Southern district of New York, presented evidence to a Federal Grand Jury investigating possible criminal violations of the Internal Revenue Code stemming out of Twin Double betting in harness racing.

Then in August, 1966, District Attorney Aaron Koota of Kings County commenced a Grand Jury investigation into possible violations of the State Penal Law by individuals in harness racing in New York State. Shortly thereafter, District Attorney, William Kohn of Nassau County also started a Grand Jury investigation with a similar purpose.

In all these various inquiries, the Commission was contacted and cooperated fully with the law enforcement agencies and assisted them in every way possible.

Since these investigations are continuing, further reference thereto is not made in this report.

1966 was the second year of the expanded season beginning on January 3rd and going through to December 15th. As anticipated, some daily averages suffered a little, but the Commission was more interested in the gross, and the grosses IN EVERY CATEGORY were up.

This was certainly a vindication of the Commission policy allowing a broader area of time for the public to attend our racing program. The tracks poured millions of dollars into physical plant expansion and improvement, and the scheduling of prestigious nationally famous horses provided excellent publicity vehicles for individual track promotions.

PROGRAMS RACED	989*	
ATTENDANCE	9,391,993*	
HANDLE	\$721,689,343.00*	
REVENUE TO STATE	\$ 70,604,742.13*	
HORSEBREEDERS FUND	\$ 2,023,606.12*	<u>*NEW RECORDS</u>
ADMISSIONS TAXES TO CITIES AND COUNTIES	\$ 3,440,073.20*	
COMMISSION AND BREAKAGE TO ASSOCIATIONS	\$ 46,447,526.18*	
PURSES PAID TO HORSEMEN	\$ 20,159,717.33*	

The effects of the LaVerne Law are becoming more evident with each passing season. The Horsebreeders Fund received \$2,023,606.12 which will help to maintain the swift acceleration of the New York State Breeding Program. More than 1290 foals will be dropped in N.Y. in 1967, truly a far cry from the 298 foals dropped in New York in 1959.

The volume of Purses to horsemen in 1966 reached \$20,159,717.33, --15.28% over 1965.

On July 1st, New York became a member of the National Association of State Racing Commissioners. This is indeed a forward step by the Commission, creating, as it does, a warm cooperative relationship between New York and all the other states administering racing programs. In Harness Racing, New York maintains a unique position, being the source of 49.18% of the National Mutuel Handle, and 39.83% of the National attendance.

REVIEW OF THE COMMISSION FUNCTION

The New York State Harness Racing Commission has a general jurisdiction over all pari-mutuel activities in the State and the corporations, associations and persons engaged therein.

Such general jurisdiction includes:

FIRST- protection and security to assure the public honest, competitive harness racing.

SECOND- to remove undesirable persons, undesirable or interlocking stock interests and ownership, and any other interests which may be detrimental to the sport and to pari-mutuel harness racing.

THIRD- to supervise labor and management relations so that racketeering elements shall not be able to creep into the sport or into the administrative portions of the business, but, at the same time, to preserve the rights of employees to bargain collectively.

FOURTH- to license all persons who participate in harness racing regardless of their position or occupation and to assure a secure method for keeping undesirable elements and unfit and improper persons from participating in pari-mutuel harness racing.

FIFTH- to supervise all building programs and to audit the books and records of licensed harness racing associations, corporations, and concessionaires engaged in the business.

SIXTH- to promulgate and file rules and regulations to properly supervise the sport.

In the administration of its responsibility the Commission, by its programs, has endeavored to instill public confidence in the integrity of the sport. This has been mostly achieved by:

1. The elimination of undesirable elements through the Commission's licensing program.
2. The supervision of the security and protective measures utilized by harness racing associations.
3. The examination of saliva and urine samples obtained from horses racing to establish whether such animals have been drugged or have been given some preparation which would affect their normal racing condition.
4. Conducting investigations on all matters pertaining to harness racing.
5. The ejection of bookmakers and touts.

6. The assessment of penalties for racing violations of the rules and regulations of the Commission.
7. Conducting hearings of violations.
8. The training and appointment of competent racing officials.

One important responsibility of the Commission is the preparation, recodification and revision of the rules and regulations governing harness racing in this State.

Fully cognizant of the National scope of harness racing, the New York State Harness Racing Commission has established a close, friendly cooperation with the United States Trotting Association, wherein the exchange of ideas, records and material has noticeably enhanced the progress of the sport.

As part of this policy, Commission representatives attend the annual United States Trotting Association convention on rules and other related matters in Columbus, Ohio, in addition to having representation at the USTA District #8 meeting, which encompasses N.Y. members.

In July of 1966, the Commission became affiliated with the National Association of State Racing Commissioners which gives us a top level liaison with the administrative racing function throughout the country.

The Commission, annually conducts public hearings and conferences with racing officials, breeders, representatives of management, harness writers covering the sport, and other interested parties for the purpose of reviewing and evaluating the effectiveness of the rules and regulations.

At these conferences, the rules are exhaustively studied, committees are established to go into specific categories in depth and then submit reports to the Commission for final study, decision and action.

The Commissioners then meet in Executive session, at which they review the final recommendations of some of the most knowledgeable men in the sport, and make the decisions which will govern New York harness racing for the next season.

HIGHLIGHTS, ALL TRACKS COMBINED - 1966 COMPARED TO 1965

	<u>1966</u>	<u>1965</u>	<u>+ INCREASE - DECREASE</u>	<u>% OF + OR -</u>
PROGRAMS RACED	989	914	+ 75	+ 8.21%
ATTENDANCE	9,391,993	9,015,472	+ 376,521	+ 4.18%
HANDLE	\$ 721,689,343.00	\$ 672,376,761.00	+ \$ 49,312,582.00	+ 7.33%
REVENUE TO STATE	\$ 70,604,742.13	\$ 64,785,005.09	+ \$ 5,819,737.04	+ 8.98%
HORSEBREEDERS FUND	\$ 2,023,606.12	\$ 1,045,451.88	+ \$ 978,154.24	+ 93.56%
ADMISSIONS TAXES TO CITIES AND COUNTIES	\$ 3,440,073.20	\$ 2,912,665.70	+ \$ 527,407.50	+ 18.11%
COMMISSION AND BREAKAGE TO ASSOCIATIONS	\$ 46,447,526.18	\$ 42,892,564.33	+ \$ 3,554,961.85	+ 8.29%
PURSES PAID TO HORSEMEN	\$ 20,159,717.33	\$ 17,487,665.68	+ \$ 2,672,051.65	+ 15.28%

SCHEDULE OF HARNESS RACING LICENSE DATES FOR 1966

<u>NAME OF TRACK AND LOCATION</u>	<u>NAME OF ASSOCIATION</u>	<u>LICENSE DATES</u>	<u>DAY PROGRAMS</u>	<u>NIGHT PROGRAMS</u>	<u>TOTAL PROGRAMS LICENSED</u>	<u>PROGRAMS CANCELLED</u>	<u>PROGRAMS RACED</u>
Batavia Downs Batavia, N. Y.	Genesee-Monroe Racing Association, Inc.	March 10 - April 30 August 8 - December 3	2	145	147	1	146
Buffalo Raceway Hamburg, N. Y.	Buffalo Trotting Association, Inc.	May 2 - August 6	0	84	84	0	84
Historic Half-Mile Track Goshen, N. Y.	Orange County Driving Park Association	July 4 - July 9*	5	0	5	0	5
Monticello Raceway Monticello, N. Y.	Sullivan County Harness Racing Association, Inc.	May 5 - September 17	4	117	121	0	121
Roosevelt Raceway Westbury, N. Y.	Roosevelt Raceway, Inc.	January 3 - March 3 May 25 - July 23 October 19 - December 15	0	154	154	0	154
Saratoga Raceway Saratoga, N. Y.	Saratoga Harness Racing Association, Inc.	April 14 - September 24	3	138	141	1	140
Saratoga Raceway Saratoga, N. Y.	Orange County Driving Park Association	September 26 - November 26	2	52	54	0	54
Vernon Downs Vernon, N. Y.	Mid-States Raceway, Inc.	May 19 - October 29	0	141	141	0	141
Yonkers Raceway Yonkers, N. Y.	Yonkers Raceway, Inc.	March 4 - May 24 July 25 - October 18	0	144	144	0	144
ALL TRACKS COMBINED		January 3 - December 15	16	975	991	2	989

* ONLY 5 DAYS OF RACING CONTEMPLATED. ONE EXTRA DAY PROVIDED FOR POSTPONEMENT ON ACCOUNT OF RAIN.

SUMMARY OF DISPOSITION OF HANDLE - 1966

TRACK	COMMISSION AND BREAKAGE		DISPOSITION OF HANDLE				PAYABLE TO PUBLIC	TOTAL	UNCASHED WINNING TICKETS FROM THE 1965 SEASON PAID TO STATE IN 1966	
	COMMISSION AT 15%	BREAKAGE	NET COMMISSION AND BREAKAGE		TO FORSEBREDERS FUND	TO ASSOCIATION				TO STATE
			TO STATE	TO ASSOCIATION						
BATAVIA DOWNS	\$ 5,934,141.90	\$ 501,955.72	\$ 6,436,097.62	\$ 2,330,398.66	\$ 3,977,360.46	\$ 125,489.18	\$ 33,127,697.70	\$ 39,560,946.00	\$ 20,668.35	
BUFFALO RACEWAY	3,416,576.85	292,187.28	3,708,764.13	1,462,232.23	2,172,499.19	73,046.88	19,069,400.70	22,777,179.00	13,314.55	
GOSHEN HISTORIC HALF-MILE TRACK	45,463.35	4,794.78	50,258.13	17,551.85	27,038.25	1,198.70	257,300.20	303,089.00	282.35	
MONTICELLO RACEWAY	6,090,238.20	413,870.90	6,504,109.10	2,755,217.55	3,640,852.26	103,467.89	34,102,050.30	40,601,588.00	29,197.60	
ORANGE COUNTY AT SARATOGA RACEWAY	1,335,568.20	102,892.12	1,438,460.32	514,941.39	897,793.71	25,723.10	7,465,329.80	8,903,788.00	4,363.50	
ROOSEVELT RACEWAY	40,244,525.70	2,929,389.22	43,173,914.92	27,666,346.82	14,758,164.27	732,347.71	225,139,979.20	268,296,838.00	95,459.20	
SARATOGA RACEWAY	4,088,437.95	375,661.15	4,464,099.10	1,647,107.87	2,697,225.05	93,915.38	22,818,004.70	27,256,253.00	13,212.00	
VERNON DOWNS	5,023,881.00	344,424.50	5,368,305.50	2,053,962.01	3,225,962.46	86,106.33	28,126,509.20	33,492,540.00	19,693.85	
YONKERS RACEWAY	42,074,568.30	3,129,242.80	45,203,811.10	29,323,378.22	15,050,630.53	782,310.95	235,340,802.30	280,497,122.00	94,308.60	
ALL TRACKS COMBINED	\$108,253,401.45	\$8,094,418.47	\$116,347,819.92	\$67,771,136.60	\$46,447,526.18	\$2,023,606.12	\$605,447,074.10	\$721,689,343.00	\$290,500.00	

THE NET COMMISSION AND BREAKAGE TO THE ASSOCIATIONS REFLECT DEDUCTIONS FOR MINUS POOLS TOTALING \$105,551.02 WHICH WERE INCLUDED WITH THE PAYABLES TO PUBLIC. THE NET COMMISSION AND BREAKAGE TO BATAVIA DOWNS INCLUDES \$219,707.09 FROM THE CONSTRUCTION FUND.

SUMMARY OF HANDLE AND ATTENDANCE - 1966 COMPARED TO 1965

TRACK	PROGRAMS RACED		HANDLE		ATTENDANCE	
	1966	1965	AMOUNT 1966	AMOUNT 1965	1966	1965
BATAVIA DOWNS	146	145	\$ 39,560,946	\$ 37,486,255	678,872	650,720
			+ \$ 2,074,691		+ 28,152	
						+ 4.33
BUFFALO RACEWAY	84	78	22,777,179	23,296,349	416,157	424,718
			- 519,170		- 8,561	
						- 2.02
GOSHEN HISTORIC HALF-MILE	5	5	303,089	316,991	9,673	10,820
			- 13,902		- 1,147	
						- 10.60
MONTICELLO RACEWAY	121	134	40,601,588	45,961,148	669,889	729,586
			- 5,359,560		- 59,697	
						- 8.18
ORANGE COUNTY AT SARATOGA RACEWAY	54	48	8,903,788	7,741,794	130,578	135,112
			+ 1,161,994		- 4,534	
						- 3.36
ROOSEVELT RACEWAY	154	133	268,296,838	244,373,336	3,088,839	2,983,045
			+ 23,923,502		+ 105,794	
						+ 3.55
SARATOGA RACEWAY	140	114	27,256,253	21,386,239	490,715	409,380
			+ 5,870,014		+ 81,335	
						+ 19.87
VERNON DOWNS	141	135	33,492,540	30,560,362	656,837	611,805
			+ 2,932,178		+ 45,032	
						+ 7.36
YONKERS RACEWAY	144	122	280,497,122	261,254,287	2,250,432	2,060,286
			+ 19,242,835		+ 190,147	
						+ 6.21
ALL TRACKS COMBINED	989	914	\$ 721,689,343	\$ 672,376,761	9,391,993	9,015,472
			+ \$49,312,582		+ 376,521	
						+ 4.18

SUMMARY OF AVERAGES BASED ON ATTENDANCE AND HANDLE - 1966

<u>TRACK</u>	<u>AVERAGE DAILY ATTENDANCE</u>	<u>AVERAGE DAILY HANDLE</u>	<u>AVERAGE HANDLE PER RACE</u>	<u>AVERAGE DAILY DOUBLE HANDLE</u>	<u>AVERAGE TWIN DOUBLE HANDLE</u>	<u>AVERAGE EXACTA HANDLE</u>	<u>AVERAGE HANDLE PER PERSON</u>	<u>PERCENTAGE OF BREAKAGE TO HANDLE</u>
BATAVIA DOWNS	4,650	\$ 270,965	\$ 24,117	\$ 32,106	\$ —	\$ —	\$ 58	1.27%
BUFFALO RACEWAY	4,954	271,157	22,426	43,494	—	12,263	55	1.28
GOSHEN HISTORIC HALF-MILE	1,935	60,618	7,216	—	—	—	31	1.58
MONTICELLO RACEWAY	5,536	335,550	26,339	37,680	34,375	24,703	61	1.02
ORANGE COUNTY AT SARATOGA RACEWAY	2,418	164,885	14,251	22,634	—	—	68	1.16
ROOSEVELT RACEWAY	20,057	1,742,187	147,481	133,152	168,935	112,768	87	1.09
SARATOGA RACEWAY	3,505	194,688	17,225	23,300	—	—	56	1.38
VERNON DOWNS	4,658	237,536	17,494	33,568	24,411	22,111	51	1.38
YONKERS RACEWAY	22,572	1,947,897	177,815	147,310	201,295	—	86	1.12
ALL TRACKS COMBINED	9,496	\$ 729,716	\$ 64,874	\$ 61,381	\$ 107,498	\$ 55,901	\$ 77	1.21%

REVENUE TO STATE AND TO CITIES AND COUNTIES

	<u>1966</u>	<u>1965</u>	<u>1964</u>	<u>1963</u>	<u>1962</u>	<u>1961</u>	<u>1966 COMPARED TO 1965</u> <u>+ INCREASE</u> <u>- DECREASE</u>	<u>% OF</u> <u>+ OR -</u>
<u>REVENUE TO STATE</u>								
COMMISSION (EXCLUDING CONSTRUCTION FUND)	\$63,745,638.06	\$59,732,656.17	\$61,464,028.48	\$52,013,715.59	\$38,600,166.71	\$37,757,733.63	+ \$ 4,012,981.89	+ 6.72%
BREAKAGE (EXCLUDING CONSTRUCTION FUND)	4,025,498.54	2,995,352.82	2,002,475.23	1,930,624.49	1,443,162.20	1,391,974.43	+ 1,030,145.72	+ 34.39
COMMISSION AND BREAKAGE FROM CONSTRUCTION FUND	---	---	---	---	4,239,521.67	---	---	---
WINNING TICKETS FROM PRIOR RACING SEASONS UNCASHE AS OF APRIL 1	290,500.00	288,273.85	251,906.50	207,407.15	202,260.40	209,752.10	+ 2,226.15	+ .77
STATE ADMISSIONS TAX	1,727,869.03	1,464,802.25	1,544,982.75	1,370,723.84	1,246,194.07	1,180,984.19	+ 263,066.78	+ 17.96
TRACK LICENSE FEES	99,000.00	91,700.00	82,800.00	81,000.00	72,100.00	70,300.00	+ 7,300.00	+ 7.96
SUPERVISORY FEES	498,450.00	NEW, STARTING APRIL 1, 1966	---	---	---	---	+ 498,450.00	---
SALIVA TEST FEES	140,620.00	129,020.00	117,580.00	114,850.00	102,530.00	89,570.00	+ 11,600.00	+ 8.99
OCCUPATIONAL LICENSE FEES	59,416.00	69,989.00	58,435.00	55,631.00	51,767.00	50,225.00	- 10,573.00	- 15.11
FINES ASSESSED	17,750.00	13,210.00	10,635.00	12,685.00	6,000.00	12,815.00	+ 4,540.00	+ 34.37
MISCELLANEOUS INCOME	.50	1.00	14.05	6.20	7.30	3.08	- .50	---
TOTAL REVENUE TO STATE	\$70,604,742.13	\$64,785,005.09	\$65,532,857.01	\$55,786,643.27	\$44,963,709.35	\$40,763,357.43	+ \$ 5,819,737.04	+ 8.98
<u>REVENUE TO CITIES AND COUNTIES</u>								
TAXES ON ADMISSIONS	\$ 3,440,073.20	\$ 2,912,665.70	\$ 3,075,906.60	\$ 2,718,770.00	\$ 2,464,750.38	\$ 2,486,330.48	+ \$ 527,407.50	+ 18.11
TOTAL TO STATE CITIES AND COUNTIES	\$74,044,815.33	\$67,697,670.79	\$68,608,763.61	\$58,505,413.27	\$48,428,459.73	\$43,249,687.91	+ \$ 6,347,144.54	+ 9.38%

REVENUE TO CITIES AND COUNTIES FROM TAXES ON ADMISSIONS - 1966 COMPARED TO 1965

<u>TRACK</u>	<u>TAXING AUTHORITY</u>	<u>RATE OF TAX</u>	<u>ADMISSIONS TAXES</u>		<u>+ INCREASE - DECREASE</u>	<u>% OF + OR -</u>
			<u>1966</u>	<u>1965</u>		
BATAVIA DOWNS	City of Batavia Genesee County	15%	\$ 64,226.68	\$ 54,230.75	\$ + 9,995.93	+ 18.43
		15%	64,226.68	54,230.75	+ 9,995.93	+ 18.43
BUFFALO RACEWAY	Erie County	15%	51,611.56	46,910.01	+ 4,701.55	+ 10.02
MONTICELLO RACEWAY	Sullivan County	15%	101,840.75	96,890.00	+ 4,950.75	+ 5.11
ROOSEVELT RACEWAY	Nassau County	30%	1,236,951.66	1,087,076.96	+ 149,874.70	+ 13.79
SARATOGA RACEWAY *	City of Saratoga Saratoga County	15%	91,185.92	67,890.56	+ 23,295.36	+ 34.31
		15%	91,185.92	67,890.56	+ 23,295.36	+ 34.31
VERNON DOWNS	Oneida County	15%	91,945.34	64,046.33	+ 27,899.01	+ 43.56
YONKERS RACEWAY	City of Yonkers Westchester County	30%	1,411,627.06	1,177,230.21	+ 234,396.85	+ 19.91
		5%	235,271.63	196,269.57	+ 39,002.06	+ 19.87
REVENUE TO CITIES AND COUNTIES			\$ 3,440,073.20	\$ 2,912,665.70	\$ + 527,407.50	+ 18.11
* Saratoga Harness Racing Association, Inc.			\$ 72,986.95	\$ 51,994.77		
Orange County Driving Park Association at Saratoga			18,198.97	15,895.79		
SARATOGA RACEWAY			\$ 91,185.92	\$ 67,890.56		

PURSES PAID - 1966 COMPARED TO 1965

TRACK	FROM			TOTAL PAID	TOTAL PAID 1965	+ INCREASE - DECREASE	% OF + OR -
	FROM TRACK FUNDS	HORSEBREEDING FUND	FROM HORSEMEN FEES OR OTHERS				
BATAVIA DOWNS	\$ 1,456,522.50	\$ 65,383.76	\$ 88,428.42	\$ 1,610,404.68	\$ 1,427,442.94	+ \$ 182,961.74	+ 12.82
BUFFALO RACEWAY	862,677.98	51,319.58	134,409.79	1,048,407.35	915,547.94	+ 132,859.41	+ 14.51
GOSHEN HISTORIC HALF-MILE	26,000.00	17,861.77	112,900.16	156,821.93	151,024.50	+ 5,797.43	+ 3.84
MONTICELLO RACEWAY	1,506,810.00	80,905.63	217,840.13	1,805,555.76	1,775,719.94	+ 29,835.82	+ 1.68
ORANGE COUNTY AT SARATOGA RACEWAY	425,850.00	—	—	425,850.00	355,900.00	+ 69,950.00	+ 19.65
ROOSEVELT RACEWAY	5,127,287.54	385,000.00	399,901.08	5,912,188.62	5,005,311.54	+ 906,877.08	+ 18.12
SARATOGA RACEWAY	1,197,523.11	28,795.97	198,445.99	1,424,765.07	1,101,793.00	+ 322,972.07	+ 29.31
VERNON DOWNS	1,288,435.75	63,087.62	172,485.55	1,524,009.92	1,331,847.00	+ 192,162.92	+ 14.43
YONKERS RACEWAY	5,846,529.00	23,000.00	382,185.00	6,251,714.00	5,423,078.82	+ 828,635.18	+ 15.28
ALL TRACKS COMBINED	\$ 17,737,705.88	\$ 715,354.33	\$ 1,706,657.12	\$ 20,159,717.33	\$ 17,487,665.68	+ \$ 2,672,051.65	+ 15.28

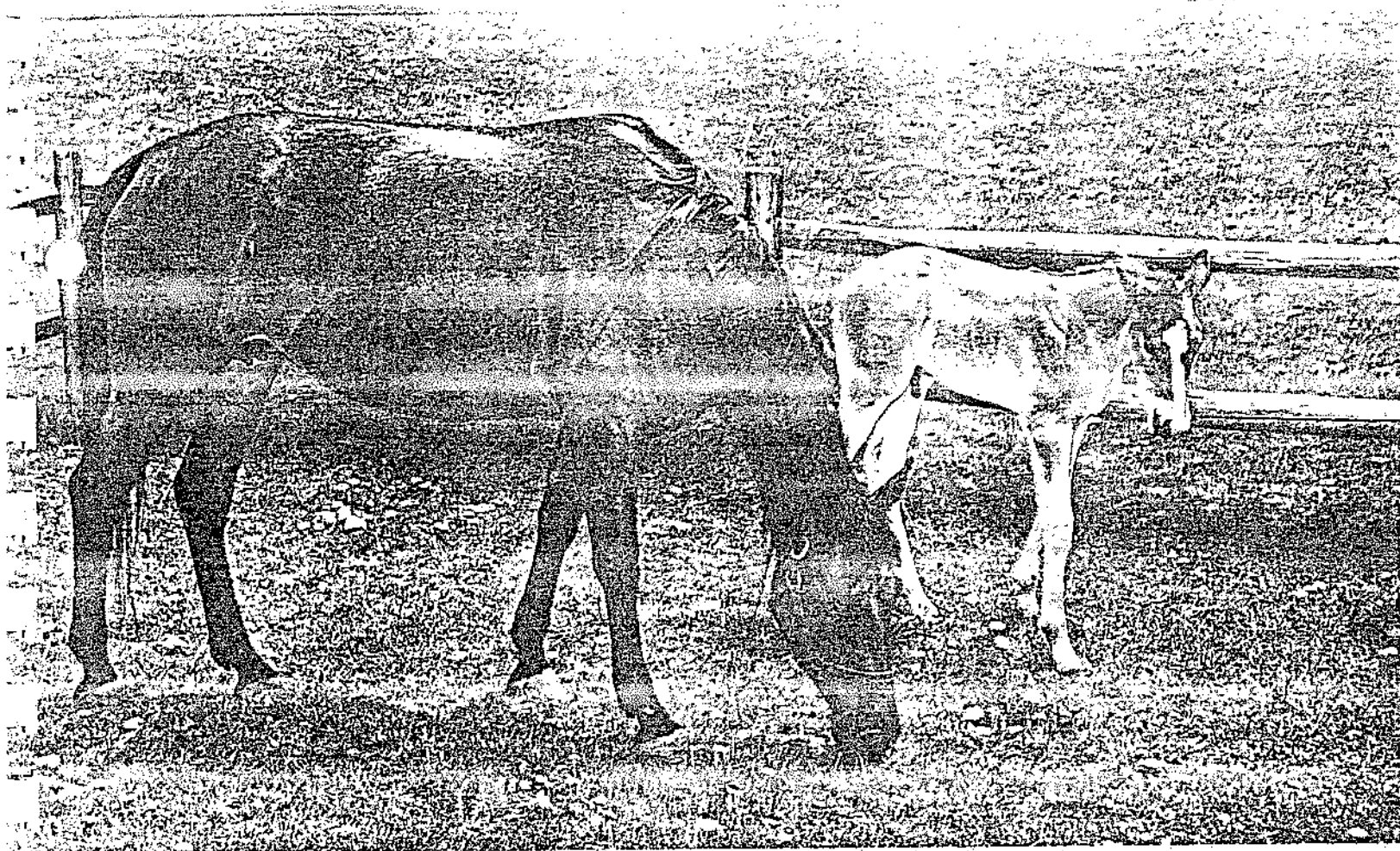
FIVE YEARS PARI-MUTUEL STATISTICS, ALL TRACKS COMBINED, 1962-1966

	1966	1965	1964	1963	1962
PROGRAMS LICENSED	991	921	828	813	721
PROGRAMS RACED	989	914	825	809	721
NUMBER OF RACES	9,336	8,546	7,590	7,362	6,408
ATTENDANCE	9,391,993	9,015,472	9,315,603	8,330,669	7,523,273
WIN, PLACE AND SHOW HANDLE	\$ 574,533,649.00	\$ 543,703,823.00	\$ 561,235,340.00	\$ 515,627,105.00	\$ 480,618,626.00
DAILY DOUBLE HANDLE	63,835,726.00	58,617,962.00	58,127,056.00	52,849,568.00	49,490,618.00
TWIN DOUBLE HANDLE	59,785,788.00	61,093,440.00	60,045,852.00	19,628,430.00	—
EXACTA HANDLE	23,524,180.00	8,961,536.00	—	—	—
TOTAL HANDLE	\$ 721,689,243.00	\$ 672,276,761.00	\$ 679,408,248.00	\$ 588,105,103.00	\$ 530,109,244.00
TOTAL COMMISSION AT 15%	\$ 108,253,401.45	\$ 100,856,514.15	\$ 101,911,237.20	\$ 88,215,765.45	\$ 79,516,386.60
TOTAL BREAKAGE	8,094,418.47	6,013,785.39	4,017,247.81	3,874,860.31	3,389,534.44
TOTAL COMMISSION AND BREAKAGE	\$ 116,347,819.92	\$ 106,870,299.54	\$ 105,928,485.01	\$ 92,090,625.76	\$ 82,905,921.04
TOTAL REVENUE TO STATE	\$ 70,604,742.13	\$ 64,785,005.09	\$ 65,532,857.01	\$ 55,786,643.27	\$ 45,963,709.35
COMMISSION AND BREAKAGE TO ASSOCIATIONS (EXCLUDING CONSTRUCTION FUND)	\$ 46,227,819.09	\$ 42,765,974.39	\$ 42,348,540.11	\$ 38,020,578.94	\$ 34,321,334.55
COMMISSION AND BREAKAGE TO ASSOCIATIONS (INCLUDING CONSTRUCTION FUNDS PLUS INTEREST)	\$ 46,447,526.18	\$ 42,892,686.83	\$ 42,454,237.72	\$ 38,142,599.59	\$ 38,652,121.40
HORSEBREEDERS FUND	\$ 2,023,606.12	\$ 1,045,451.88	NEW IN 1965		
GROSS PURSES PAID TO HORSEMEN	\$ 20,159,717.33	\$ 17,487,665.68	\$ 17,224,524.90	\$ 15,476,715.10	\$ 14,021,471.08
AVERAGE DAILY HANDLE	\$ 729,716.00	\$ 735,642.00	\$ 823,525.00	\$ 726,953.00	\$ 735,242.00
AVERAGE DAILY ATTENDANCE	9,496	9,864	11,292	10,297	10,434
AVERAGE HANDLE PER PERSON	\$ 77.00	\$ 75.00	\$ 73.00	\$ 71.00	\$ 70.00

ALL - TIME RECORD HIGHS HANDLE AND ATTENDANCE FOR EACH TRACK

TRACK	HANDLE			ATTENDANCE		
	SEASON	DAY	DAILY AVERAGE	SEASON	DAY	DAILY AVERAGE
BATAVIA DOWNS	\$ 29,560,946 1966	\$ 595,320 Oct. 29, 1960	\$ 292,516 1960	678,872 1966	13,228 August 26, 1966	5,461 1953
BUFFALO RACEWAY	\$ 26,692,872 1964	\$ 476,550 June 6, 1964	\$ 306,815 1964	461,856 1964	12,779 July 15, 1966	5,617 1958
GOSHEN HISTORIC HALF-MILE	\$ 348,811 1962	\$ 122,944 July 5, 1965	\$ 71,167 1964	11,153 1962	3,991 July 5, 1965	2,231 1962
MONTICELLO RACEWAY	\$ 45,961,148 1965	\$ 718,314 July 16, 1966	\$ 378,646 1963	729,586 1965	13,711 July 16, 1966	6,292 1963
ORANGE COUNTY AT SARATOGA RACEWAY	\$ 8,903,788 1966	\$ 381,111 Nov. 26, 1966	\$ 164,885 1966	135,112 1965	6,645 Sept. 4, 1965	3,193 1946
ROOSEVELT RACEWAY	\$ 268,296,838 1966	\$ 2,857,802 Dec. 7, 1963	\$ 2,055,312 1964	3,229,243 1964	54,861 August 20, 1960	26,912 1964
SARATOGA RACEWAY	\$ 27,256,252 1966	\$ 391,512 July 3, 1965	\$ 210,329 1962	490,715 1966	9,304 July 3, 1965	5,023 1949
VERNON DOWNS	\$ 23,492,540 1966	\$ 509,491 July 17, 1965	\$ 239,703 1961	656,837 1966	14,169 July 17, 1965	4,937 1961
YONKERS RACEWAY	\$ 280,497,122 1966	\$ 3,191,020 Nov. 30, 1962	\$ 2,141,429 1965	3,327,069 1964	40,386 August 16, 1958	25,397 1964

BREEDING IN NEW YORK STATE



REPORT OF THE AGRICULTURE AND
NEW YORK STATE HORSE BREEDERS
DEVELOPMENT FUND

Don J. Wickham, Chairman

Robert A. Glasser

George C. Paffenbarger

George W. Barker

Dr. Harry M. Zweig

The Agriculture and New York State Horse Breeding Development Fund in 1966, the first year of its operation, has provided a significant contribution to this State's over-all financial development with the full impact of this year's activities to be more directly measurable in the next two years.

As a direct result of the passage of the Laverne Bill by the New York State Legislature in 1965 which established the Development Fund, and the implementation of a comprehensive and meaningful New York Sire Stakes harness racing program for the State's eight harness racing tracks, there has been a noticeable resurgence in the standardbred horse breeding industry within the State. This is in accord with the legislative intent expressed in the law creating the Development Fund which specifies that it is in "the definite interest of the state to promote and develop agriculture generally and the improvement of the breeding of horses particularly."

In addition, the Development Fund is providing the first stable means for state-wide assistance for the repair and maintenance of physical facilities at county and regional fairs; furnishing the purses for the non pari-mutuel harness racing program at the State Exposition, as well as maintaining and improving these racing facilities, and encouraging the development of a great interest in the breeding and training of standardbred horses through a concentrated 4-H Club program.

* * *

The harness racing activities within the State provide a substantial contribution to the State's economy and in 1966 the eight tracks returned some \$70.6 million to the State which was \$5.8 million more than the preceding year. However, to maintain this progressive increase in State revenue from this industry there is a need to assure the track patrons that there are sufficient numbers of quality harness horses available for all of the racing dates and for each of the daily races. Development of new harness tracks in Canada, Pennsylvania and other

nearby States, as well as the recent authorization of night harness racing in New Jersey, is certain to attract numerous New York patrons as well as a number of New York standardbred pacers and trotters.

The establishment of a meaningful and comprehensive New York Sire Stakes Program under the direct control of the Development Fund and the wide acclamation this program has received from standardbred horse owners indicates that a definite means has been provided to maintain the quantity and quality of harness horses available within the State to meet anticipated future requirements.

* * *

Through its New York Sire Stakes Program the Fund sanctions stake races at each of the licensed harness tracks for two, three and four-year-old horses which have been bred within the State, and provides the purses and prizes to be awarded for each of these Sire Stake races. In 1966 the Development Fund allocated \$1,063,000 to the eight harness racing associations for New York Sire Stakes races.

* * *

The availability of the Sire Stakes purses has been acknowledged by numerous horse breeding farm owners and harness horse owners as the major reason for enlarging existing farms or establishing new farms in the State. One farm near Rochester already has grown from two trotters to 22 trotters and pacers. A former prize dairy and show cattle farm on 200 acres of land in Pine Bush, N.Y. has been developed into a standardbred breeding farm which will eventually stable 175 horses.

As an added incentive to owners to breed harness horses within the State the Development Fund in 1966 provided purses totalling \$238,000 for the non pari-mutuel racing program conducted at the New York State Exposition in Syracuse.

This was the largest two-day purse schedule for standardbred horse races in the history of state fairs or expositions. The feature race at the two-day event was a \$48,000 race for three-year-old pacers.

The possibility of participating in New York-bred racing events, which in 1966 totalled \$1,650,000 in purses, has had a significant effect on the sale of standardbred horses within the State. At the annual Old Glory Sale held at Yonkers in 1966 two new records were set: 156 New York-bred yearlings were sold for \$464,870, and the highest average price ever paid per horse was \$2,980. The reason given by most purchasers for the increase in prices was the eligibility of these horses for the New York Sire Stakes.

* * *

Another facet of the Development Fund's program which is encouraging owners to establish breeding farms within the State is the nominal New York Sire Stakes sustaining fee schedule. For some \$635 a New York-sired standardbred horse can become eligible for 24 Stake events over a three-year period, and in Sire Stake #7 it is estimated that the total purses for these 24 races will be in excess of \$450,000. There is nothing comparable to this anywhere in the world.

All of these factors - meaningful New York Sire Stakes Program, nominal sustaining fee schedule, increasing average purchase price paid for New York-bred standardbred horses - are having a dramatic effect upon the standardbred horse breeding industry in the State.

* * *

Now, for the first time in history, New York State is assisting the agricultural societies to maintain and improve county and local fairgrounds which annually serve as a stimulus to the farm industry and for the improvement of

homemaking technology.

Under authority provided the Development Fund a maximum of \$6,000 can be granted during any one year to each fair, and in 1966 \$198,310 was allocated to 42 town and county fairs.

* * *

At the New York State Exposition grounds in Syracuse the construction and maintenance of the racing facilities has become a direct responsibility of the Development Fund. Some \$59,000 was expended in this phase of the Fund's operations during 1966 for race track area improvements and for repairs to the horse barns.

* * *

To encourage and develop greater interest in the breeding and training of standardbred horses among the State's citizens the Development Fund is organizing a concentrated program to meet future 4-H Club requirements. At the present time there are more than 100 4-H horse clubs throughout the State with an active enrollment of about 6,000 youths. The Development Fund's program will provide for 4-H Club horse clinics, development and acquisition of teaching material, educational scholarships, breed achievement awards, purchase of brood mares for 4-H activities and trips to breeding farms etc., for 4-H Club members.

* * *

"BREAKAGE" PROVIDES THE FUNDS

Tax monies are not involved in the expenditures of the Agriculture and New York State Horse Breeding Development Fund since these monies are not derived from general tax revenue sources, but come from the "breakage" at the harness tracks. This "breakage" represents the odd pennies left over after payments to the holders

of winning tickets are rounded off to the dime. It is interesting to note that in the sixteen states authorizing pari-mutuel harness racing all but one "breaks" to the nearest ten cents. In 1966 the "breakage" accruing to the Development Fund amounted to more than \$2 million. To this was added sustaining fees of some \$185,000 paid by owners to maintain eligibility of their horses, and over \$32,000 interest from investments.

By the terms of the Statute distribution of income is made as follows:

- 75 percent for purses for New York-breds at licensed harness tracks
 - 10 percent for improving fairgrounds for county and town agricultural societies
 - 7½ percent for New York State Exposition harness racing purses
 - 3 percent for improving New York State Exposition racing facilities
 - 2 percent for 4-H Club Standardbred Horse Development Program, and
 - 2½ percent for administration.
-

NEW YORK STATE STANDARDBRED RECORDS

	<u>Yearlings Nominated for New York Sire Stakes</u>	<u>Stallions Registered</u>	<u>Mares Bred</u>	<u>Estimated Number of Foals</u>
1958	-	-	496	-
1959	-	-	580	298
1960	234	-	676	348
1961	254	108	1200	406
1962	286	148	1299	720
1963	483	157	1390	779
1964	521	173	1402	834
1965	588	193	1633	841
1966	653	215	2149	980

It is estimated that there will be 1289 foals this year.

Pert, pretty Mary Clark, 13, is shown rubbing down her Broodmare, Linda Mac, at her parents farm in Cobleskill, N.Y. ...A grand daughter of the late great reinsman, Johnny Porter, Mary attends the Cobleskill Central School and is an active participant in the 4-H Standard-Bred Breeding Program...



1966 OPTIONAL TWIN DOUBLE HANDLE

TRACK	OPTION TWIN DATES RACED	NO. OF DAYS	TWIN DOUBLE HANDLE	LESS COMMISSION AND BREAKAGE	TOTAL AMOUNT	NET POOL PAYABLE TO PUBLIC				
						OPTION PAY-OFFS (FUNDS RECIRCULATED)	TWIN DOUBLE PAY-OFFS			
VERNON DOWNS	AUGUST 1 - OCTOBER 29	78	\$ 1,977,262	\$ 298,137	\$ 1,679,125	100.00%	\$ 1,280,856	76.28%	\$ 398,269	23.72%
IONKERS RACEWAY	SEPTEMBER 26 - OCTOBER 1	6	963,784	146,553	817,231	100.00	401,685	49.15	415,546	50.85
ROOSEVELT RACEWAY	OCTOBER 19 - DECEMBER 15	50	7,793,354	1,184,208	6,609,146	100.00	4,293,956	64.97	2,315,190	35.03
COMBINED		<u>134</u>	<u>\$ 10,734,400</u>	<u>\$ 1,628,898</u>	<u>\$ 9,105,502</u>	<u>100.00%</u>	<u>\$ 5,976,497</u>	<u>65.64%</u>	<u>\$ 3,129,005</u>	<u>34.36%</u>

REPORT OF LICENSING AND INVESTIGATION SECTION

Harness Racing is a sport whose success depends for the most part upon the public confidence in its integrity. In order to maintain that confidence, the Commission makes every effort to bar and remove undesirables from participation in the sport.

To this end, all applicants for licensing are subjected to screening procedures designed to eliminate persons whose character and background make them unsuitable for licenses to engage in the sport. All applicants are required to execute detailed and sworn applications accompanied by photographs and fingerprints. False statements on the applications constitute serious violations and may result in a person's suspension, revocation, or denial of license or other legal action decided upon by the Commission.

Frequently, information reflected in an application may result in an extensive investigation conducted by the Commission in order for the Commission to make a final determination as to whether the applicant meets the necessary character requirements for licensing. Investigations of this nature are conducted with care and thoroughness so that all factors bearing on the issue of the investigation are explored in the best interests of the public.

Thanks to the excellent and continued cooperation of Messrs. J. Edgar Hoover, Director of the Federal Bureau of Investigation; Robert J. Gallati, Director of New York State Identification

and Intelligence System; Arthur Cornelius Jr., Superintendent of the New York State Police; the Ontario Provincial Police in Canada; the New York City Police and to the other local police departments in this state and other states of America, thousands of fingerprints submitted by the Commission are processed annually, making the criminal file checking function of the Commission possible.

The licensing activities of the Commission have increased substantially since the inception of licensing in 1954 due to the extension of the harness racing seasons to an almost all-year round basis. In 1966, the number of applications processed reached the level of 19,825. Of this number, 214 licenses were suspended, revoked or denied because of adverse information obtained by the Commission which indicated an applicant's unfitness to hold a Commission license.

Compilation of information on harness racing participants has become so extensive in the Commission files that inquiries are received daily from harness racing authorities throughout the United States and Canada. That the Commission has become virtually an international clearing house for all matters relative to the sport is indicative of the intensive coverage and evaluation of information pertinent to harness racing.

The step-up in the licensing activities is best reflected in the figures representing the number of applications received in 1966 as compared with those processed in 1954. In 1966,

applications received, reviewed and processed numbered 19,825. In 1954, this figure was 11,417, reflecting an increase of 8,408 or 74% in 1966.

Set forth below are the figures indicating the number of applications reviewed and processed since the inception of licensing in 1954 and the number of denials and revocations of licenses since that year:

<u>YEAR</u>	<u>APPLICATIONS RECEIVED</u>	<u>DENIED</u>	<u>SUSPENDED AND REVOKED</u>
1954	11,417	230	188
1955	11,452	65	46
1956	11,736	66	95
1957	13,356	63	96
1958	15,443	91	115
1959	15,559	97	113
1960	16,077	94	85
1961	16,798	83	92
1962	17,307	78	99
1963	18,605	89	89
1964	19,543	88	117
1965	19,709	91	105
1966	<u>*19,825</u>	<u>105</u>	<u>109</u>
TOTAL	206,827	1,240	1,349

* There were 24 applications upon which licenses were not issued because these applications were either withdrawn by the applicants, were incomplete and for various other reasons.

In 1966, the Commission approved 19,587 licenses of which 8340 were horsemen and 11,247 were in various other categories of non-horsemen, grooms, mutuel clerks, administrative help, food service, concessionaires and other miscellaneous categories.

The following is a summary, by category, of the final 1966 statistics of license denials, license suspensions and license revocations:

	<u>Denied</u>	<u>Suspended</u>	<u>Revoked</u>
HORSEMEN:			
(Owners-Trainers-Drivers)	38	34	3
NON-HORSEMEN:			
Grooms	48	42	0
Mutuel Clerks	6	6	0
Food Service	7	19	1
General Track Personnel	5	2	0
Miscellaneous	1	2	0
TOTAL	<u>105</u>	<u>105</u>	<u>4</u>

In 1966, the Investigation Section conducted approximately 700 special investigations on applicants and licensees who became subjects of such investigations on the basis of information received which indicated that they had criminal backgrounds or had failed to report criminal records at the time they applied for licenses. In addition, investigations were directed into the activities of licensees who were allegedly involved, or affiliated, with undesirable characters who themselves would be disqualified from participation in harness racing. In the latter

instances, investigations conducted by the Commission revealed that several licensees had applied for licensing as owners and were, in fact, "fronting" for persons with criminal records who were supplying funds for the purchase and maintenance of horses. When investigations firmly established the hidden interests of the known criminals in the horses of the licensees, the latter were immediately suspended pending hearings by the Commission with the ultimate view of revoking the licenses.

The Commission is obliged to pay tribute to those law enforcement agencies who have contributed so much to the fulfillment of the Commission's investigative functions.

Local, state, and federal agencies, and district attorneys throughout the state have lent complete assistance in those cases which required the investigative facilities of these agencies. In addition, city and state police units throughout the United States have offered whole-hearted cooperation to the task confronting the Commission and have consistently furnished essential information to Commission investigators when requested.

Frequently, the Commission is in a position to reciprocate and assist local law enforcement and other agencies who require information contained in the Commission files. In these instances, the files of the Commission are thrown open to such agencies and when necessary, investigators are assigned

to cooperate to whatever extent necessary. Further, in several instances, fingerprints of applicants forwarded to the Federal Bureau of Investigation for processing revealed that the applicant was wanted in connection with a crime under the jurisdiction of that agency and, as a result of the fingerprints taken by the Commission, the fugitive was located and arrested.

The Financial Responsibility Rule adopted by the Commission makes it incumbent upon a licensee to fulfill his financial obligations at the risk of the loss of his license. The attitude of the Commission is that in a sport such as harness racing financial irresponsibility reflects upon a licensee's character and fitness. Thus, when a complaint is received by the Commission that a licensee has failed to make payment for services or materials, even if such obligations are not related to the sport, appropriate investigation is made to determine whether the licensee is purposely in default. The licensee is then ordered to take whatever steps are necessary to satisfy his creditors or face Commission action against his license.

The Commission is responsible for all security matters at the eight New York State harness tracks. Acting directly under Commission supervision, security officers maintain a constant vigilance of barns and other related areas, and occasionally spot checks are made for illegal paraphernalia, such as hypodermic needles, syringes, drugs, etc. The discovery of such items places responsibility on those persons supervising the areas, such as grooms, trainers, drivers and owners. In those

instances where such items are found, intensive investigation and interrogation of the aforementioned licensees follows and penalties imposed by the Commission are severe. Further, state and local authorities with pertinent jurisdiction are notified by the Commission for whatever action may be deemed advisable in the event a violation of law has occurred.

The Commission maintains a stringent but discreet security operation designed to protect the public at all tracks and at all times. Little publicity is attached to this effective operation which involves the barring and ejection of those individuals at tracks who are known or suspected touts, book-makers, known gamblers, confidence men and others who prey upon an unknowing public. In 1966, hundreds of persons falling into one or more of these categories were removed from the tracks without fanfare and in several instances where such persons returned and were again discovered by security personnel, fines and sentences were imposed by local courts.

SALIVA AND URINE SAMPLES

Section 100.1 of the Harness Racing Commission rules specifies that the winning horse in every race shall be subjected to a saliva and urine test in order to determine the presence of any drug, stimulant, sedative, depressant or other medicine. The rules further authorize the track steward or presiding judge at any race meeting to order any other horse in the race to be subjected to such tests at the discretion of these officials. Further, in every race where the purse exceeds \$7,500

the second and third horses therein shall be given the saliva and urine tests.

In 1966, 18,272 samples were collected and submitted for chemical examination. In only one instance during 1966 was a sample reported to contain a drug in the urine specimen of a winning horse. Investigation at the place of race in question, namely Vernon Downs, revealed that the owner of the horse, who was also a veterinarian had placed Butazolidin in powdered form, in the feed of his horse to lessen an inflammation in the horse's leg. According to the owner, he had placed the medication in the feed at a time consistent with the Commission rules which prohibit any form of medication 48 hours prior to the race in which the horse was entered.

Investigation revealed that the horse had not fully consumed the feed which contained the medication at the time it was given to him but had finished it the following day which was the day before the race making it a violation of Commission rules.

Because he had failed to exercise proper caution in the use of medication in this instance the owner was suspended for the remainder of the 1966 season by the Commission.

The almost negligible number of cases of drugging horses in the last few years is attributable to the constant vigilance of the Commission and the immediate action taken to uncover the facts surrounding the finding of foreign substances in the urine and saliva samples.

The following figures represent the number of samples collected at all tracks under Commission supervision during 1966:

<u>TRACK</u>	<u>SALIVA</u>	<u>URINE</u>	<u>TOTAL</u>
BATAVIA DOWNS	1,502	1,239	2,741
BUFFALO	924	729	1,653
GOSHEN HISTORIC	79	14	93
MONTICELLO	1,216	1,022	2,238
ROOSEVELT	1,752	1,086	2,838
SARATOGA	2,003	1,575	3,578
VERNON DOWNS	1,337	1,220	2,557
YONKERS	1,489	1,085	2,574
TOTALS	<u>10,302</u>	<u>7,970</u>	<u>18,272</u>

RACING PENALTIES IMPOSED

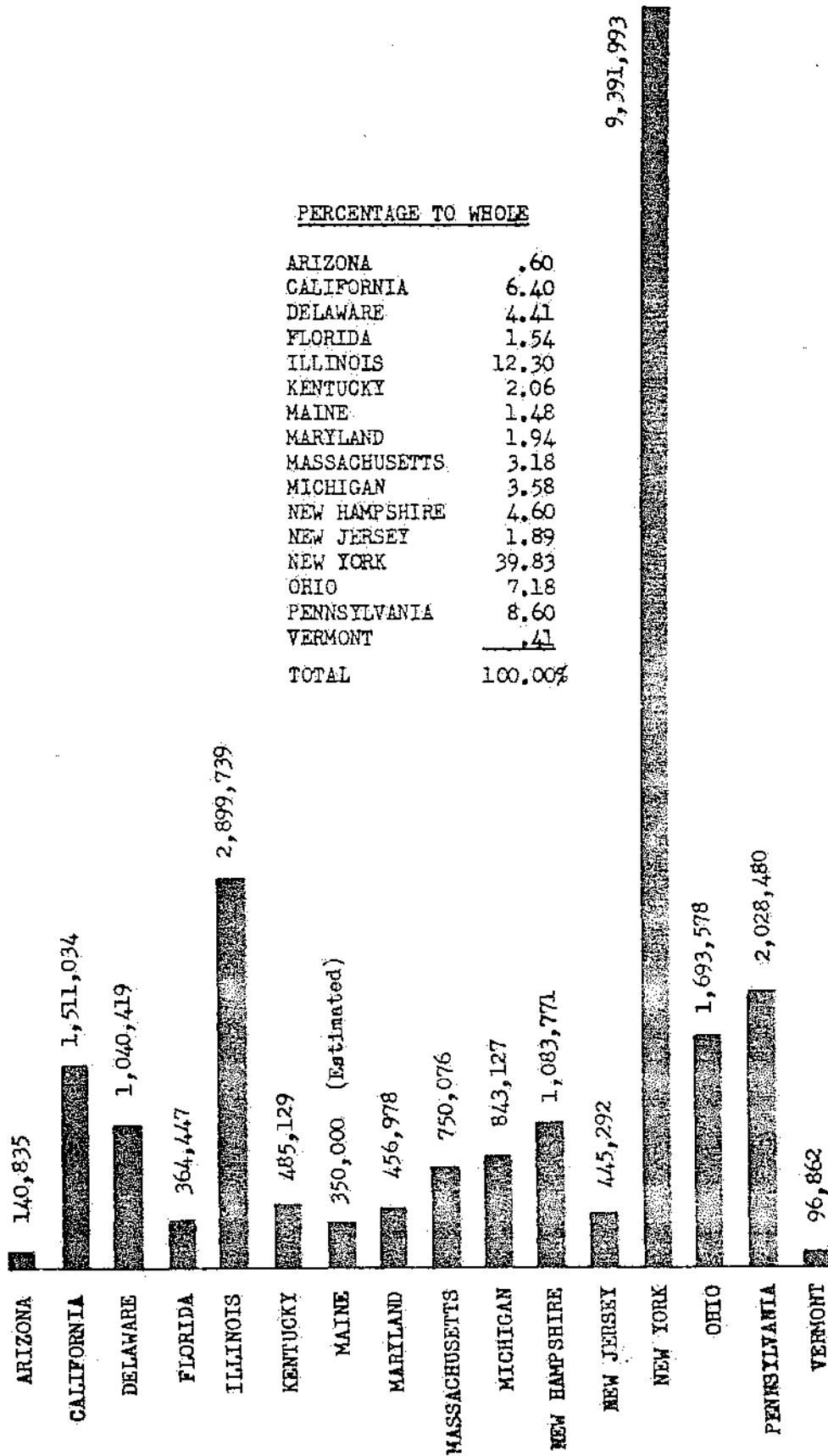
<u>TRACK</u>	<u>1961</u>	<u>1962</u>	<u>1963</u>	<u>1964</u>	<u>1965</u>	<u>1966</u>
BATAVIA DOWNS	31	43	46	30	36	64
BUFFALO RACEWAY	11	30	17	24	25	68
GOSHEN HISTORIC HALF-MILE	1	1	0	0	0	0
MONTICELLO RACEWAY	59	56	64	60	90	63
ROOSEVELT RACEWAY	47	34	32	51	62	54
SARATOGA RACEWAY (SARATOGA HARNESS RACING ASSOCIATION, INC.)	45	48	28	47	74	67
SARATOGA RACEWAY (ORANGE COUNTY DRIVING PARK ASSOCIATION)	25	11	17	25	34	20
VERNON DOWNS	50	29	23	21	41	53
YONKERS RACEWAY	<u>63</u>	<u>51</u>	<u>64</u>	<u>42</u>	<u>21</u>	<u>34</u>
TOTAL	<u>332</u>	<u>303</u>	<u>291</u>	<u>300</u>	<u>383</u>	<u>423</u>

Harness Racing

Is National!



HARNESS RACING ATTENDANCE
BY STATES -- 1966

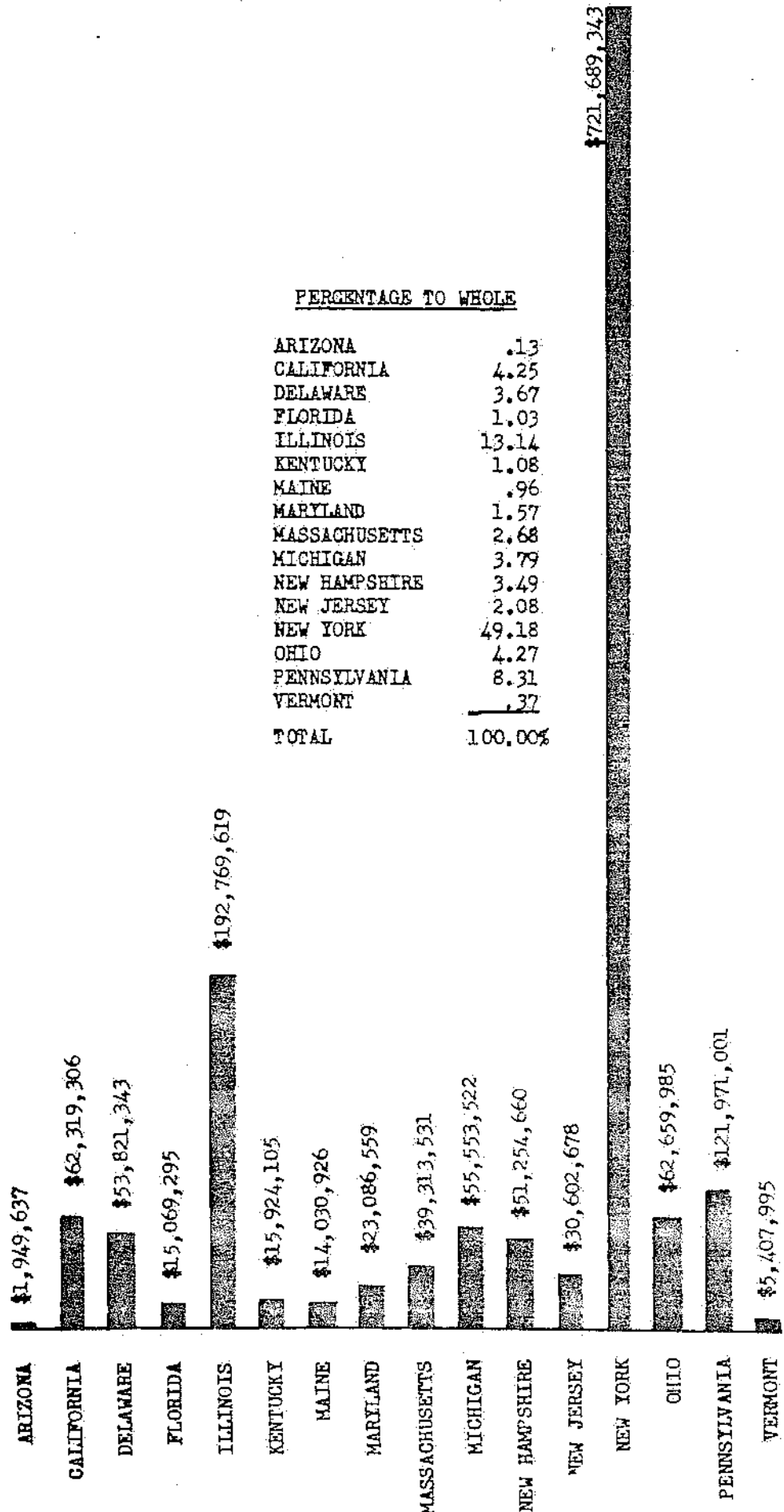


PERCENTAGE TO WHOLE

ARIZONA	.60
CALIFORNIA	6.40
DELAWARE	4.41
FLORIDA	1.54
ILLINOIS	12.30
KENTUCKY	2.06
MAINE	1.48
MARYLAND	1.94
MASSACHUSETTS	3.18
MICHIGAN	3.58
NEW HAMPSHIRE	4.60
NEW JERSEY	1.89
NEW YORK	39.83
OHIO	7.18
PENNSYLVANIA	8.60
VERMONT	.41
TOTAL	100.00%

STATISTICAL SOURCE - USTA

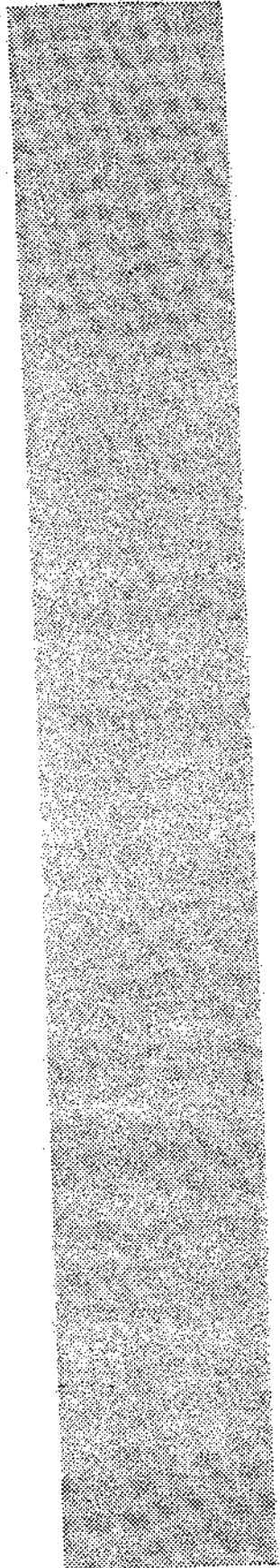
HARNESS RACING PARI-MUTUEL HANDLE
BY STATES --- 1966



PERCENTAGE TO WHOLE

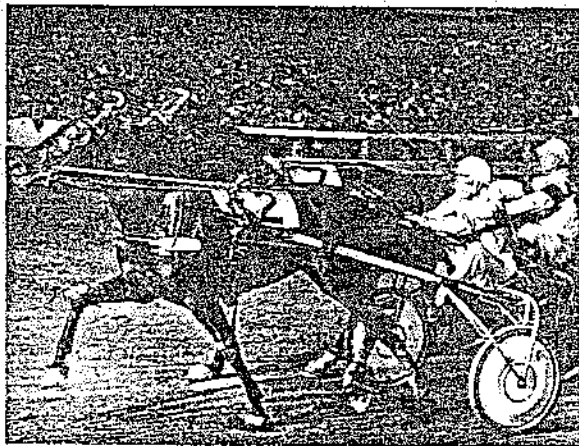
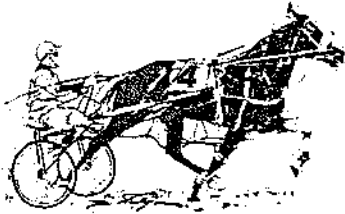
ARIZONA	.13
CALIFORNIA	4.25
DELAWARE	3.67
FLORIDA	1.03
ILLINOIS	13.14
KENTUCKY	1.08
MAINE	.96
MARYLAND	1.57
MASSACHUSETTS	2.68
MICHIGAN	3.79
NEW HAMPSHIRE	3.49
NEW JERSEY	2.08
NEW YORK	49.18
OHIO	4.27
PENNSYLVANIA	8.31
VERMONT	.37
TOTAL	100.00%

THESE WERE THE BIG ONES-

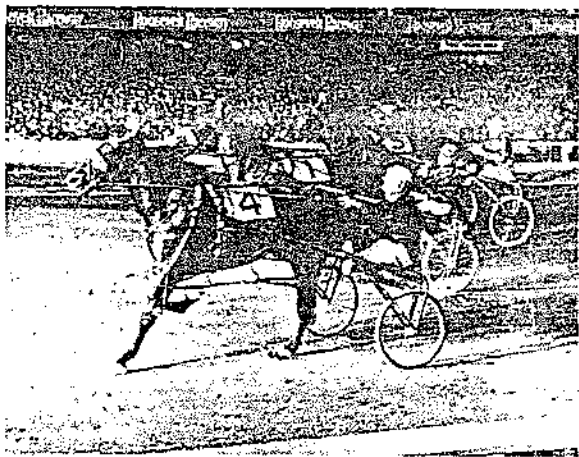


AT

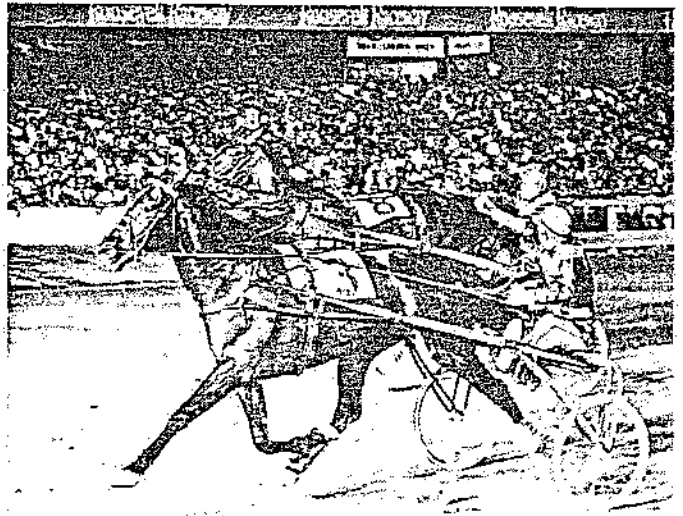
ROOSEVELT



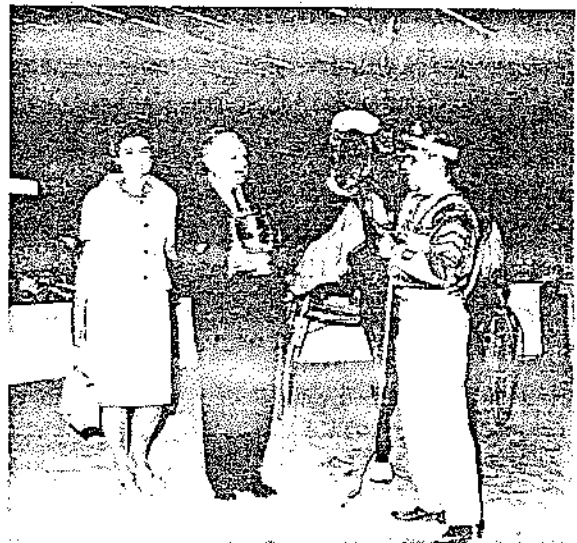
Canada's great Armbro Flight (2) necks out France's Roquepine (7) as they battle down to the wire in the eighth edition of the \$100,000 Roosevelt International.



Bret Hanover (4) gets even with Cardigan Bay (5) who finished 3rd, in the \$50,000 Revenge Pace. Brets time 1:59 2/5. Frank Ervin reins the great pacer. Rex Pick is the second place finisher.



Noble Victory (3) scores in a record duplicating 2:31 2/5 mile and one-quarter performance in the \$50,000 American Trotting Championship. Worthy Scot (8) finishes second.



On June 25 Perfect Freight established a world mark of 2:08 3/5 for 1 1/16 miles in annexing the \$89,111 Realization Trot. Del Insko, accepts trophy from Mr. and Mrs. William Weisman.

STAKES AND MAJOR EVENTS

1966

<u>DATE</u>	<u>RACE</u>	<u>WINNER</u>	<u>DRIVER</u>	<u>TIME</u>
5/25/66	"The Commodore" Pace Invitational 3 Yr. Olds \$25,000	Romeo Hanover	W. Myer	2:03
5/28/66	"The Realization" Pace (1 1/16 m.) Stake 4 Yr. Olds \$86,111.12	Bret Hanover	F. Ervin	2:12.2
6/4/66	"The Revenge" Pace F.F.A. \$50,000	Bret Hanover	F. Ervin	1:59
6/10/66	"The Yankey Trot" F.F.A. \$25,000	Ambro Flight	J. O'Brien	*2:01.2
6/11/66	"The Dan Patch" Pace Stake 2 Yr. Olds \$27,774.25	Nardin's Byrd	W. Haughton	2:04.3
6/14/66	"The Volomite" Trot Stake 2 Yr. Olds Colts & Geldings \$28,074.25	Cardinal Jamie	G. Sholty	2:07.1
6/17/66	"The Belle Acton" Pace Stake 2 Yr. Old Fillies \$29,074.25	Sunrise Hanover	C. Champion	2:07
6/21/66	"The Proximity" Trot Stake 2 Yr. Old Fillies \$27,074.25	Flamboyant	W. Haughton	2:09.1
6/25/66	"The Realization" Trot (1 1/16 Mi.) Stake 4 Yr. Olds \$89,113.13	Perfect Freight	D. Insko	**2:08.3
7/1/66	"The Miss Universe" Pace Invitational \$25,000	Smoke Over N.	G. Sholty	2:01.2
7/2/66	"The American Trotting Championship" (1 1/4 mi.) Invitational \$50,000	Noble Victory	S. Dancer	***2:31.2
7/9/66	"The Roosevelt International" Trot Invitational (1 1/4 Mi.) \$100,00	Ambro Flight	J. O'Brien	2:31.3

7/16/66	"The Challenge Cup" Trot (1 1/2 mi.) Silver Division - Invitational \$15,000	Interloper	A. Niles Jr.	3:11.2
7/16/66	"The Challenge Cup" Trot Gold Division Invitational (1 1/2 Mi.) \$25,000	Lord Gordon	J. Patterson Sr.	3:07.4
10/19/66	"The Westbury Futurity" Trot Stake 2 Yr. Olds \$54,149.50	Pay Dirt	E. Avery	2:07.4
10/22/66	"The Roosevelt Futurity" Pace Stake 2 Yr. Olds \$52,149.50	Romulus Hanover	W. Haughton	2:04
10/29/66	"The Messenger Stakes" Pace Stake 3 Yr. Olds \$169,885.24	Romeo Hanover	G. Sholty	2:01
10/31/66	"The Lady Maud" Pace Stake 3 Yr. Old Fillies \$37,321.31	Bonjour Hanover	S. Dancer	2:01.3
11/7/66	"The Lady Suffolk" Trot Stake 3 Yr. Old Fillies \$30,060.12	Starlight Way	G. Sholty	2:05.1
11/10/66	"The Dexter Cup" Trot Stake 3 Yr. Olds \$87,180.36	Carlisle	W. Haughton	2:07.2
11/26/66	"The Bye Bye Byrd" Invitational-AAL-Pace \$15,000	Pocomoonshine	L. Fontaine	2:02
11/26/66	"The Adios Butler" Pace Invitational-FFA \$25,000	Adios Vic	J. Dennis	2:01.1
12/3/66	"The National Pacing Derby" (1 1/4 mi.) Invitational \$50,000	Cardigan Bay	S. Dancer	2:34.2
12/12/66	"The Nassau Pace" (1 1/2 mi.) Invitational \$50,000	Cardigan Bay	S. Dancer	3:09.3

* New Track Record for 4 Yr. Old Trotting Mare & World Record (New)

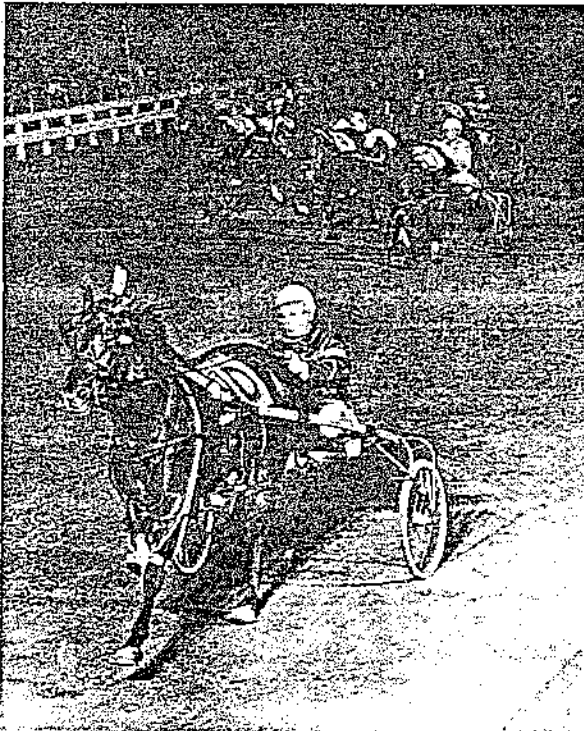
** New World Record for 1 1/16

*** Equals World Record

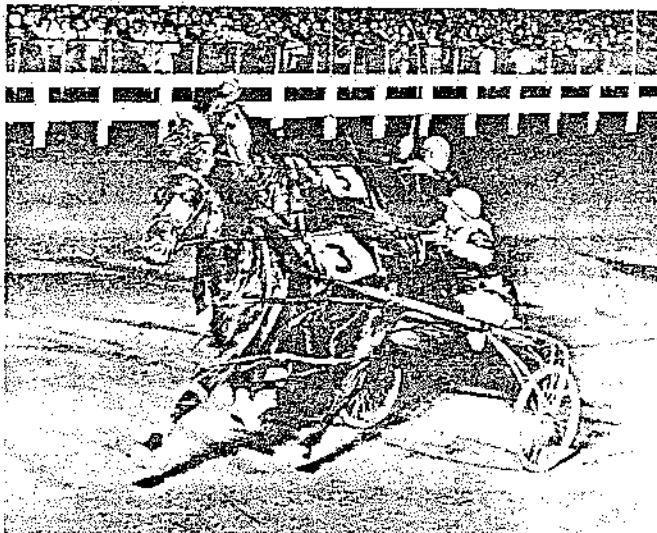
NEW YORK SIRES STAKES
1966
ALL RACES 1 MILE

<u>DATE</u>	<u>RACE</u>	<u>WINNER</u>	<u>DRIVER</u>	<u>TIME</u>
10/20/66	2 Yr. Olds (Colts & Geldings) Pace \$39,478.80	Bobby Ed	T. Dennis	2:05.1
10/25/66	2 Yr. Old (Fillies) Pace \$34,023.40	Molly Brook Dean	W. Hudson	2:06.4
10/26/66	2 Yr. Olds (Colts & Geldings) Trot \$39,478.80	Joe Zam	R. Wilcox	2:10.3
11/1/66	2 Yr. Old Fillies Trot \$35,814.10	Duchess Rose	V. Dancer	2:11.3
11/2/66	3 Yr. Old Fillies Pace \$40,462.00	Avon Girl	L. Harner	2:06.3
11/2/66	3 Yr. Old Colts Pace \$40,762.00	See Lucky	S. Dancer	2:06.1
11/15/66	3 Yr. Old Fillies Trot \$40,263.00	Cee Zam	W. Gilmour	2:08.4
11/15/66	3 Yr. Old Colts & Geldings Trot \$40,063.00	Clever Ward	G. Garnsey	2:09.3
11/16/66	4 Yr. Old Open Pace \$49,475.00	Danny Row Gil	E. Harner	2:04
11/22/66	4 Yr. Olds Open Trot \$49,025.00	Hicki Hi	A. Burton	2:08.3

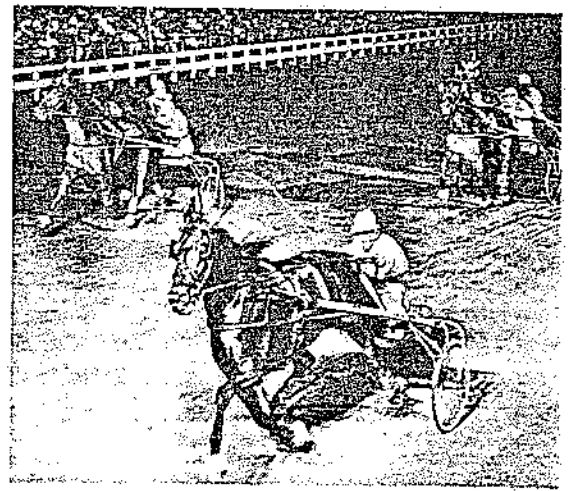
YONKERS



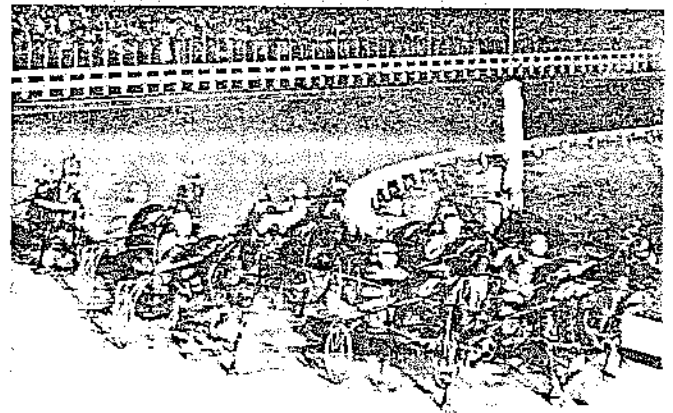
Romeo Hanover (10-Billy Myer) races to an easy $4\frac{1}{2}$ -length victory in the \$126,915 Cane Futurity Pace. Romeo toured the oval in 1:59 $\frac{4}{5}$ with Buzzy Hanover (7-Billy Current) second and Chris Time (4-George Sholty) third.



CARDIGAN BAY (3-Stanley Dancer) wins the \$65,000 Pace Of The Century, beating Bret Hanover (5-Frank Ervin) by a full length in 2:00.



Polaris (7-George Sholty) wins the \$123,015 Yonkers Futurity for three year olds by two and a half lengths. Governor Armbro (5-Joe O'Brien) was second by three-quarters and Kerry Way (4-Frank Ervin) was 3rd.



Nardin's Byrd (1A-Del Insko) leads the 10-horse \$100,000 Lawrence B. Sheppard Pace field into the first turn. The colt, owned by Arthur Nardin, held on to win the Sheppard, pacing's richest 2-year-old event. Best of All (4-Jim Hackett) finished second and Romulus Hanover (1B-Billy Haughton) wound up third. Time was 2:03 $\frac{2}{5}$.

1966 YONKERS RACEWAY SPRING STAKES AND FEATURE WINNERS

- March 4 - The Inaugural (Four-Year-Old Mares and Up)-\$16,950-1 Mile.
Balenzano (George Phalen)-2:02.3
- March 10 - First Qualifier, The Adios Boy-\$12,500-1 Mile.
Vicki's Jet (Stanley Dancer)-2:02.4
- March 10 - Second Qualifier, The Adios Harry-\$12,500-1 Mile.
Great Credit (Del Insko)-2:02.1
- March 10 - Third Qualifier, The Adios Butler-\$12,500-1 Mile.
Adora's Dream (John Chapman)-2:02.4
- March 17 - The Consolation, The Countess Adios-\$12,500-1 Mile.
Irvin Paul (Charles King)-2:03.4
- March 17 - The Consolation, The Dottie's Pick-\$12,500-1 Mile.
Palette (William Myer)-2:02.4
- March 17 - The Final, The Adios-\$25,000-1 1/4 Miles.
Vicki's Jet (Del Insko)-2:33.4
- March 31 - The American Preview-\$25,000-1 Mile.
Murdock Hanover (Robert Camper)-2:02.2
- April 7 - The Hale Dale-\$25,000-1 1/4 Miles.
Murdock Hanover (Robert Camper)-2:33.3
- April 14 - The International-\$100,000-1 1/2 Miles.
Cardigan Bay (Stanley Dancer)-3:04.2
- April 21 - The Good Time-\$50,000-1 1/4 Miles.
Cardigan Bay (Stanley Dancer)-2:34.4
- April 28 - The National Championship-\$50,000-1 1/2 Miles.
Cardigan Bay (Stanley Dancer)-3:04.4
- May 12 - The Cane Three-Year-Old Prep (First Division)-\$18,750-1 Mile.
Romeo Hanover (William Myer)-2:02
- May 12 - The Cane Three-Year-Old Prep (Second Division)-\$18,750-1 Mile.
Overcall (John Patterson, Sr.)-2:04
- May 19 - The Cane Futurity Three-Year-Old Pace-\$126,915.25-1 Mile.
Romeo Hanover (William Myer)-1:59.4
- May 20 - Pace Of The Century-\$65,000-1 Mile.
Cardigan Bay (Stanley Dancer)-2:00
- May 21 - The Hoot Mon-\$25,000-1 Mile.
Noble Victory (Stanley Dancer)-2:01.4

SUMMER STAKES AND FEATURE WINNERS - 1966

- EMPIRE PACE - Bret Hanover, 1 1/4 Miles, 2:33.2, July 28
Driver: Frank Ervin Purse \$100,000
- BRONX FILLY PACE - Bonjour Hanover, 1 Mile, 2:02.1, July 30
Driver: Stanley Dancer Purse \$35,407
- YONKERS FUTURITY PREP - Polaris, 1 Mile, 2:03.1, August 4
Driver: George Sholty Purse \$25,000
- YONKERS FUTURITY TROT - Polaris, 1 Mile, 2:06, August 11
Driver: George Sholty Purse \$123,375
- MAYOR'S CUP FFA PACE - Bret Hanover, 1 Mile, 2:00, August 12
Driver: Frank Ervin Purse \$35,000
- LA PALOMA FILLY PACE - Meadow Elva, 1 Mile, 2:03.3, August 15
Driver: Stanley Dancer Purse \$25,000
- LOU DILLON TROT - Flamboyant, 1 Mile, 2:07.1, August 16
Driver: John Chapman Purse \$25,000
- BYE BYE BYRD FFA PACE - Cardigan Bay, 1 1/4 Miles, 2:30.4, August 18
Driver: Stanley Dancer Purse \$25,000
- SCOTLAND TROT - Pay Dirt, 1 Mile, 2:05.3, August 22
Driver: Earle Avery Purse \$25,000
- STAR POINTER PACE - Romulus Hanover, 1 Mile, 2:00.2 (World Record), August 23
Driver: William Haughton Purse \$25,000
- STAR'S PRIDE TROT - Noble Victory, 1 Mile, 2:31.4, August 25
Driver: Stanley Dancer Purse \$25,000
- BILLY DIRECT FFA PACE - Cardigan Bay, 1 Mile, 1:59.1, September 1
Driver: Stanley Dancer Purse \$25,000
- DANBURY FFA/JFA TROT - Speedy Rodney, 1 Mile, 1:58.3 (World Record), Sept. 2
Driver: Del Insko Purse \$25,000
- HUDSON FILLY TROT - Coalition, 1 Mile, 2:06.4, September 3
Driver: Olof Widell Purse \$32,947
- HILLTOP TROT - Noble Victory, 1 1/4 Miles, 2:34.1, September 8
Driver: Stanley Dancer Purse \$100,000
- LAWRENCE B. SHEPPARD PACE - Nardin's Byrd, 1 Mile, 2:03.2, September 15
Driver: Del Insko Purse \$100,000
- E. ROLAND HARRIMAN TROT - Flamboyant, 1 Mile, 2:09.2, September 22
Driver: William Haughton Purse \$100,000
- NEW YORK SIRE STAKE NO. 6 (FILLY TROT) - Bobby Ed, 1 Mile, 2:05.1, Sept. 26
Driver: Ted Dennis Purse \$46,835
- NEW YORK SIRE STAKE NO. 6 (COLTS & GELDINGS PACE) - Duchess Rose, 1 Mile, 2:11, Sept. 26
Driver: Vernon Dancer Purse \$51,000

NEW YORK SIRE STAKE NO. 6 (FILLY PACE) - Molly Brook Dean, 1 Mile, 2:08.4, Sept. 27
Driver: William Hudson Purse \$48,450

NEW YORK SIRE STAKE NO. 6 (COLT & GELDING TROT) - Sir Cingle, 1 Mile, 2:13.2, Sept. 27
Driver: James McCasland Purse \$49,300

NEW YORK SIRE STAKE TROT NO. 5 - Cee Zam, 1 Mile, 2:09.2, September 28
Driver: William Gilmour Purse \$12,057

NEW YORK SIRE STAKE TROT NO. 5 - Melrose Mamie, 1 Mile, 2:08.4, September 28
Driver: Stanley Dancer Purse \$12,057

NEW YORK SIRE STAKE PACE NO. 5 - Meditation, 1 Mile, 2:08.4, September 29
Driver: Vincent Ferriero Purse \$12,157

NEW YORK SIRE STAKE PACE NO. 5 - See Lucky, 1 Mile, 2:08.1, September 29
Driver: Stanley Dancer Purse \$12,157

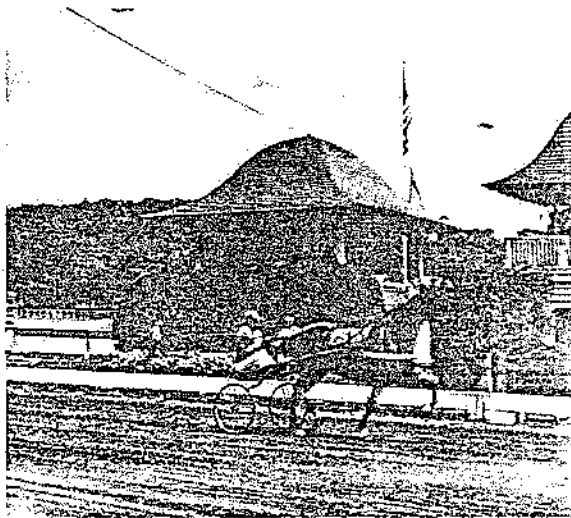
NEW YORK SIRE STAKE TROT NO. 4 - Hicki Hi, 1 Mile, 2:08.1, September 30
Driver: Al Burton Purse \$18,783

NEW YORK SIRE STAKE PACE NO. 4 - Danny Row Gil, 1 Mile, 2:07.3, October 1
Driver: Eldon Harner Purse \$19,983

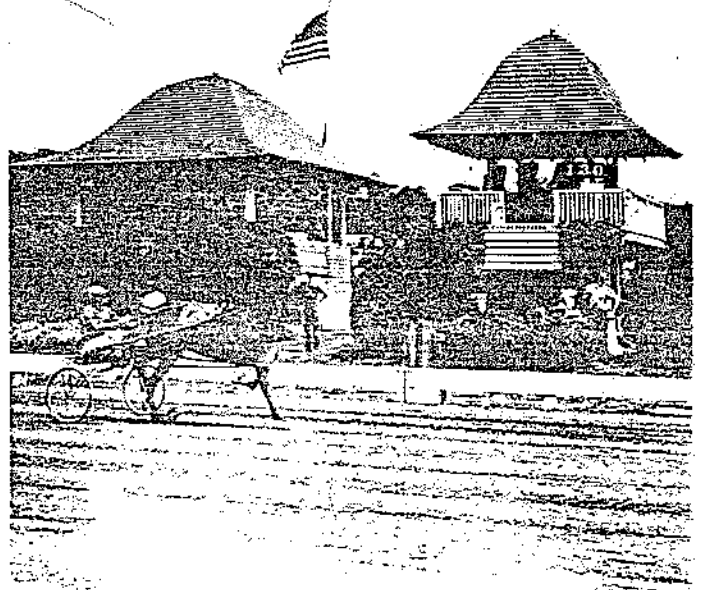
GOTHAM TROT - Speedy Rodney, 1 1/4 Miles, 2:33.1, October 8
Driver: Del Insko Purse \$50,000

UNITED NATIONS TROT - Roquepine, 1 1/2 Miles, 3:06.1, October 18
Driver: Jean-Rene Gougeon Purse \$100,000

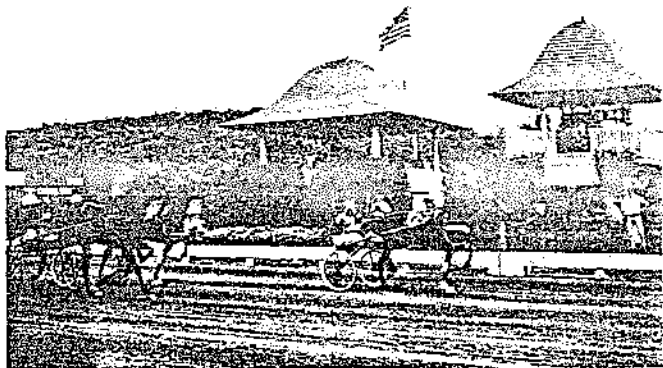
GOSHEN



SPEEDY RODNEY - Winner of the 1st heat for THE TITAN CUP. Phil Corey, Driver. World's fastest mile on a half-mile track - TIME: 1:58.4



BONJOUR HANOVER - Winner of the 1st Heat of The Ladyship. Stanley Dancer - Driver.



HICKORY BLAZE - Winner of the 2nd Heat of the Harriman Challenge Trophy. Wm. Haughton, Driver



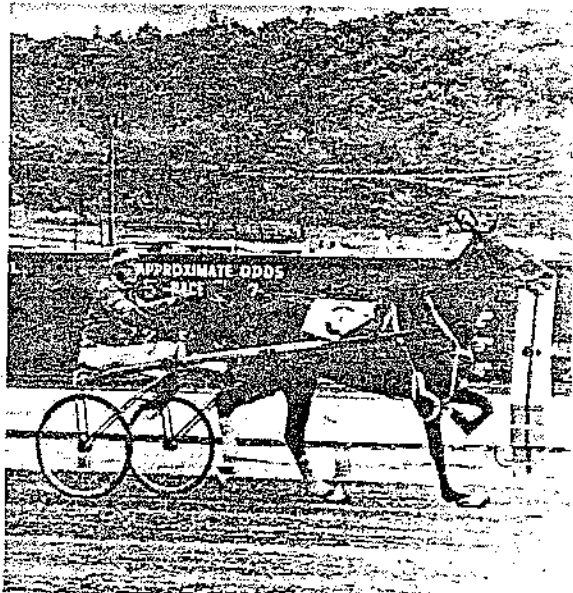
ROMULUS HANOVER - Winner of the 1st Heat of the Goshen Cup. Wm. Haughton driver.

1966 Stakes
HISTORIC TRACK
Goshen, N.Y.

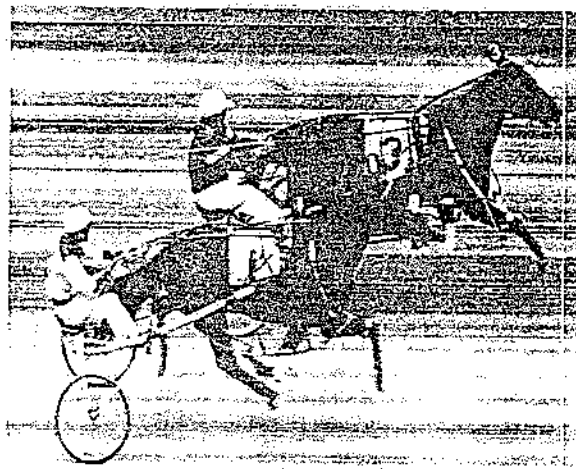
<u>Stake</u>	<u>Winner</u>	<u>Driver</u>	<u>Time</u>	<u>Purse</u>
The Acorn Stake	Kimberly Dutchess	R. Baldwin	2:06.2 2:07.3	\$13,265.30
The Debutante Stake	Ember Hanover	R. Thomas	2:04.3 2:02.3	\$15,542.25
The Ladyship Stake	Bonjour Hanover	S. Dancer	1:59.4 2:03.2	\$10,373.00
E.H. Harriman Challenge Trophy	Hickory Blaze	W. Haughton	2:06.1 2:15.2	\$11,707.00
Coaching Club Trotting Oaks	Mary Donner	F. Ervin	2:03.1 2:11.2	\$14,053.00
The Goshen Cup	Romulus Hanover	W. Haughton	2:01.2 2:03.2	\$14,323.25
Historic Dickerson Cup	Bonus Boy	A. Cameron	2:05 2:04.3	\$ 5,775.00
Orange County Cup	Newport Robbi	A. Cameron	2:02 2:03.1	\$ 5,300.00
The Titan Cup	Speedy Rodney	P. Corley	1:58.4 2:00.3	\$13,575.00

(NEW WORLD'S RECORD -- ONE HEAT AND TWO HEATS)

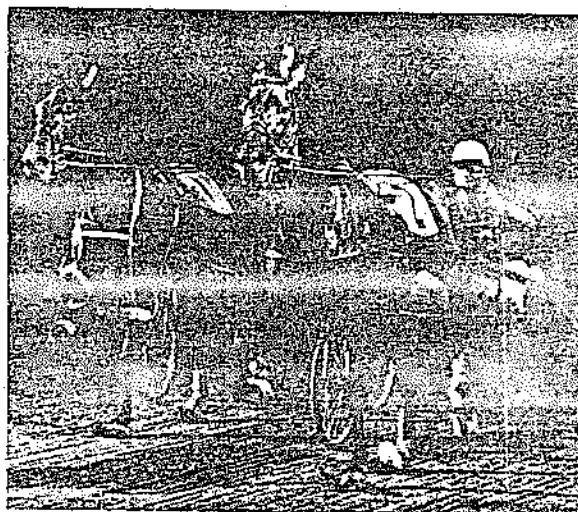
MONTICELLO



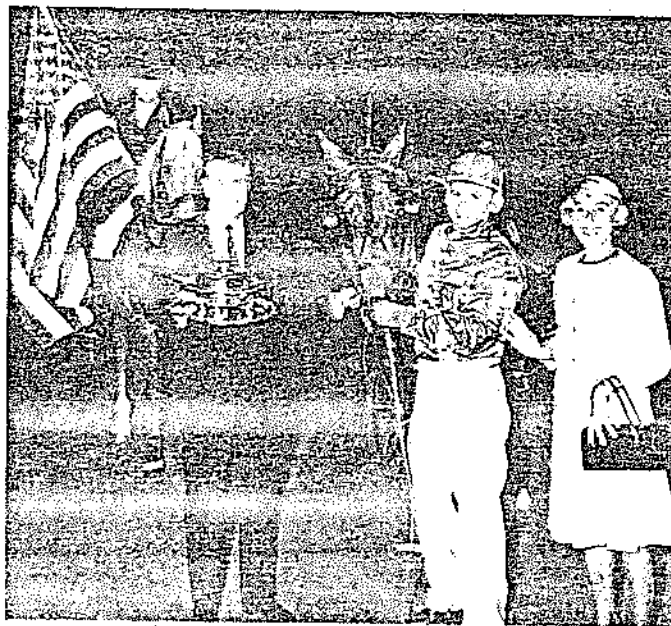
The $1\frac{1}{4}$ mile Founder's Cup Trot for a purse of \$16,865, is won by Rucky Revonah. Art Allen is in the seat behind the Vernon Dancer trained four-year-old.



Romeo Hanover hangs it on True Duane for the second straight week at the Catskill oval for driver Bill Myer. Romeo was victorious in 1:59 $\frac{4}{5}$.



Sanders Russell teams Fresh Yankee to victory in the Fred Egan Trot. The Hickory Pride three-year-old trotting filly turned back Mary Donner (1), Frank Ervin up.



Herve Filion is all smiles after winning the \$17,600 Can-Am Series Final. Mr. Sidney Gaines and Mrs. Henry G. Friedlander present the trophy to Filion after his 2:02 triumph with Shadydale Hymn.

MONTICELLO RACEWAY

1966 STAKES AND SPECIAL EVENTS

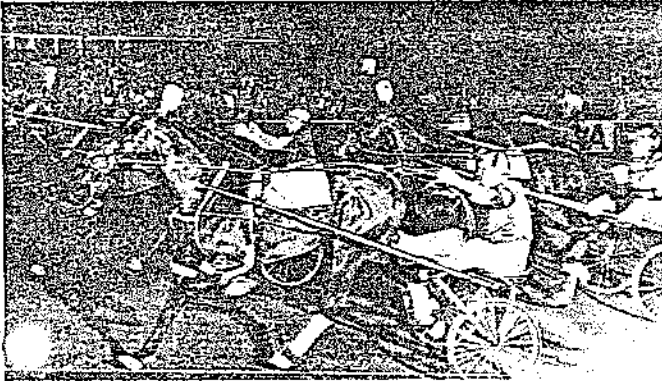
- May 6--Can-Am Series Pace-\$8,900-1 Mile
 (1st Div.) Caliburn-Vernon Dancer-2:03 3/5
 (2nd Div.) Jethro Hanover-Gerald Kazmaier-2:05 4/5
- May 14--E.T. Gerry Trot-\$9,735-1 Mile
 Trader Gent-James Arthur-2:06 1/5
- May 28--G.M. Levy Pace-\$9,735-1 Mile
 Overcall-John Patterson, Sr.-2:06 1/5
- June 10--Yankey Trot-\$4,000-1 Mile
 Victory Camp-Alfred Burton-2:04 4/5
- June 18--Sen. J.J. Dunnigan Trot-\$10,135-1 Mile
 Eileen Eden-Stanley Dancer-2:05 2/5
- July 2--F.E. Devlin Challenge Pace-\$17,265-1 Mile
 Adios Vic-James Dennis-2:01 2/5
- July 8--Can-Am Series Pace-\$5,000-1 Mile
 Royal Gene Pick-John Schroeder-2:03 2/5
- July 11--Harry Whitney Trot-\$9,728-1 Mile
 Floral Hanover-Levi Harner-2:08 1/5
- July 11--Rupe Parker Pace-\$18,789-1 Mile
 (1st Div.) Tudor Hanover-William Haughton-2:05 3/5
 (2nd Div.) Nardin's Byrd-William Haughton-2:06 4/5
- July 12--Will Caton Pace-\$11,609-1 Mile
 Meadow Elva-William Haughton-2:06
- July 12--Tom Berry Trot-\$9,729-1 Mile
 Hickory Blaze-William Haughton-2:07 4/5
- July 13--Fred Egan Trot-\$7,416-1 Mile
 Fresh Yankee-Sanders Russell-2:05
- July 14--Walter Cox Pace-\$8,696-1 Mile
 Blossom Time-Marcel Dostie-2:04
- July 15--Ben White Trot-\$6,376-1 Mile
 Bonus Boy-Adelbert Cameron-2:04 4/5
- July 16--Henry Thomas Pace-\$7,896-1 Mile
 Romeo Hanover-William Myer-1:59 3/5
- July 18--Harry Whitney Trot-\$8,929-1 Mile
 Melifer-Harold Miller-2:08 2/5
- July 18--Rupe Parker Pace-\$16,289-1 Mile
 Romulus Hanover-William Haughton-2:02 3/5*

- July 19--Tom Berry Trot--\$8,729-1 Mile
Hickory Blaze-William Haughton-2:10 4/5
- July 19--Will Caton Pace--\$12,009-1 Mile
Ember Hanover-Richard Thomas-2:06
- July 20--Fred Egan Trot--\$6,816-1 Mile
Fresh Yankee-Sanders Russell-2:06 4/5
- July 21--Walter Cox Pace--\$10,596-1 Mile
(1st Div.) Speedy Pace-Clyde Harris-2:06
(2nd Div.) Bonjour Hanover-Stanley Dancer-2:02 4/5*
- July 22--Ben White Trot--\$6,376-1 Mile
Lou's A Dilly-Alfred Burton-2:06 2/5
- July 23--Founder's Cup Trot--\$16,865-1 $\frac{1}{4}$ Miles
Rucky Revonah-Arthur Allen-2:38 3/5
- July 23--Henry Thomas Pace--\$7,496-1 Mile
Romeo Hanover-William Myer-1:59 4/5
- Aug. 8--N. Y. Sires Stakes Trot No. 6--\$9,551-1 Mile
Walter's Jeanne-Anthony Abbatiello-2:11 2/5
- Aug. 8--N. Y. Sires Stakes Pace No. 6--\$10,758-1 Mile
Bobby Ed-Ted Dennis-2:06
- Aug. 9--N. Y. Sire Stakes Trot No. 6--\$10,478-1 Mile
Sir Cingle-James McCasland-2:10 3/5
- Aug. 9--N. Y. Sire Stakes Pace No. 6--\$10,311-1 Mile
(1st Div.) Melrose Josie-Robert Camper-2:08
(2nd Div.) Miss Prim Trim-James McCasland-2:06
- Aug. 10--N. Y. Sire Stakes Trot No. 5--\$11,323-1 Mile
Be Spoken-Eugene Pownall-2:08 3/5
- Aug. 10--N. Y. Sire Stakes Trot No. 5--\$11,323-1 Mile
Clever Ward-Garland Garnsey-2:08 4/5
- Aug. 11--N. Y. Sire Stakes Pace No. 5--\$11,323-1 Mile
Avon Girl-Levi Harner-2:06
- Aug. 11--N. Y. Sire Stakes Pace No. 5--\$11,923-1 Mile
Santo Tom-Anthony Abbatiello-2:04 2/5
Poplar Max-Clint Galbraith-2:04 4/5
- Aug. 13--N. Y. Sire Stakes Trot No. 4--\$12,436-1 Mile
Shooter-Harry Pownall, Sr.-2:05 2/5
- Aug. 13--N. Y. Sire Stakes Pace No. 4--\$12,986-1 Mile
(1st Div.) Danny Row Gil-Eldon Harner-2:03 1/5
(2nd Div.) Runnymede Chuck-James Sprouse-2:02 3/5

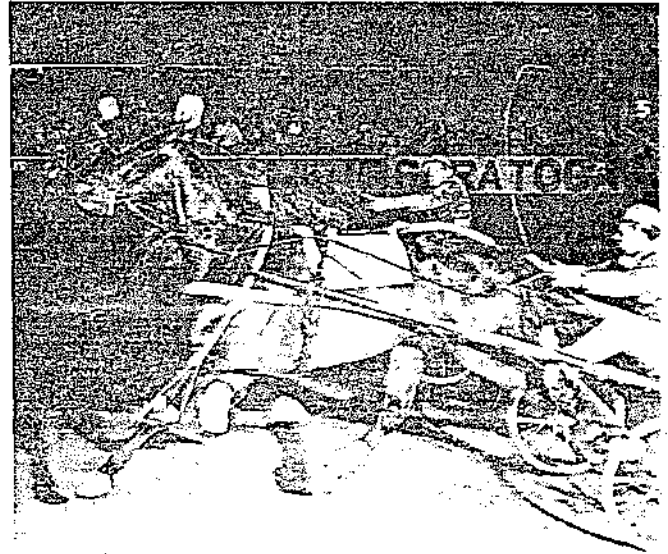
- Aug. 18--Catskill Trot--\$5,110-1 Mile
Donald James-Angus Allen-2:07 2/5
- Aug. 19--Catskill Pace-Cancelled
- Aug. 27--Can-Am Series Pace Final-\$17,600-1 Mile
Shadydale Hymn-Herve Filion-2:02
- Sept. 3--Sen. J. J. Crawford Pace-\$8,735-1 Mile
Miss Butler-Vernon Dancer-2:08 3/5
- Sept. 5--Juvenile Education Series Final Trot-\$15,000-1 Mile
Glee-Harry Pownall, Sr.-2:08 3/5
- Sept. 6--Juvenile Education Series Final Filly Pace-\$10,000-1 Mile
Farmer's Hostess-William Haughton-2:05 3/5
- Sept. 7--Juvenile Education Series Final Pace-\$15,000-1 Mile
King Omaha-Robert Camper-2:04 4/5

*Track Record

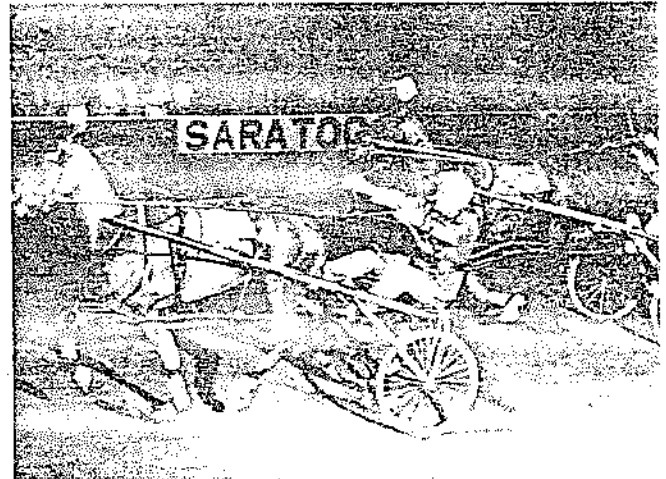
SARATOGA



Del Cameron brings Bonus Boy (8) home in front in 2:01 $\frac{4}{5}$, to set a new World Record for three-year-old trotting geldings on a half-mile track.



Noble Victory (6-Stanley Dancer) nips Speedy Rodney while setting a new World Record of 1:59 for 4-year-old trotting stallions on a half-mile track.



W.W. Smith (4-Howard Parker) paces to a new World Record of 1:58 $\frac{4}{5}$ ths for four-year-old geldings on a half-mile track.

1966 Stakes
SARATOGA RACEWAY
Saratoga, N.Y.

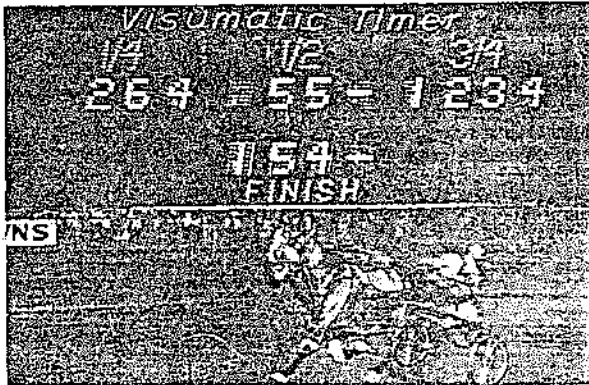
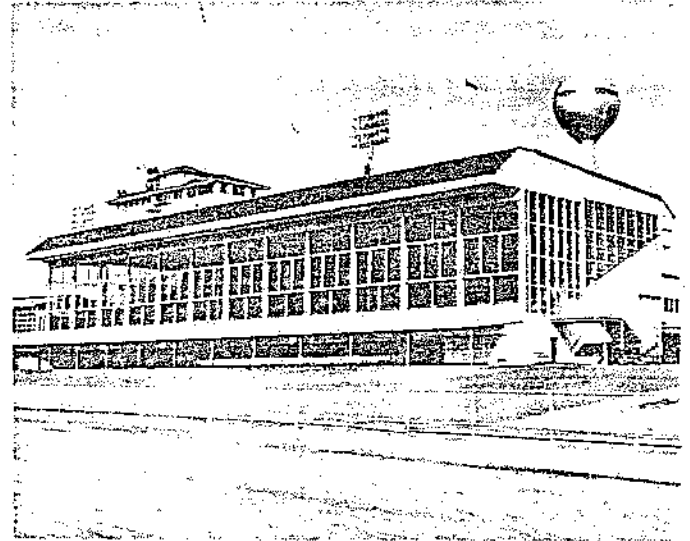
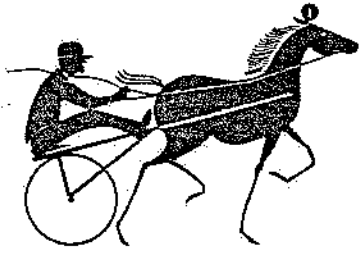
<u>Stake</u>	<u>Winner</u>	<u>Driver</u>	<u>Time</u>	<u>Purse</u>
Can Am Pace	Shadydale Hymn	H. Fillion	2:03.1	\$ 5,000
Can Am Pace	Niagara Byrd	C. Galbraith	2:01.3	\$ 5,000
Can Am Pace	Niagara Byrd	C. Galbraith	2:01.2	\$ 5,000
Yankey Trot	Curly Lambert	A. Boucher	2:07.1	\$ 4,000
Battle of Saratoga (2-yr-old filly trot)	Venice Hanover	G. Sholty	2:05.4	\$15,320 (Div)
Battle of Saratoga (2-yr-old colt pace)	Nardin's Byrd	S. Dancer	2:03.4	\$18,000 (Div)
Battle of Saratoga (3-yr-old filly pace)	Bonjour Hanover	S. Dancer	2:02	\$12,900
Battle of Saratoga (2-yr-old filly pace)	Luscious Lou	W. Andrews	2:06.1	\$14,000
Battle of Saratoga (2-yr-old colt trot)	Crackshot	J. Chapman	2:06.3	\$15,480 (Div)
Battle of Saratoga (3-yr-old colt trot)	Bonus Boy	A. Cameron	*2:01.4	\$17,800
Battle of Saratoga (3-yr-old filly trot)	Starlight Way	C. Clark	2:04	\$14,400
Battle of Saratoga (3-yr-old colt pace)	Romeo Hanover	W. Myer	1:59.3	\$16,900
Silver Anniversary Championship	Noble Victory	S. Dancer	*1:59	\$15,000
The Weeks	W.W. Smith	H. Parker	*1:58.4	\$ 3,500
The Plattsburgh	W.W. Smith	H. Parker	1:59.2	\$ 6,000
HTA Pace	Rivaltime	G. Sholty	1:59.3	\$15,720

1966 Stakes
SARATOGA RACEWAY
Saratoga, N.Y.

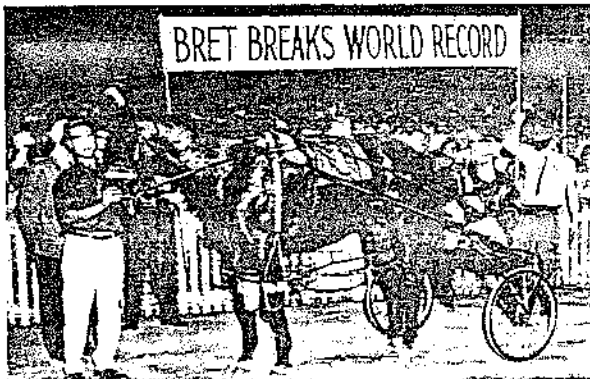
<u>Stake</u>	<u>Winner</u>	<u>Driver</u>	<u>Time</u>	<u>Purse</u>
N. Y. Sire Stakes (2-yr-old filly pace)	Adios Treat	E. Harner	2:11.3	\$ 4,470
N. Y. Sire Stakes (2-yr-old colt trot)	Joe Zam	R. Wilcox	2:14.2	\$ 4,694
N. Y. Sire Stakes (2-yr-old filly trot)	Bonjule	J. Schroeder	2:11.2	\$ 4,470
N. Y. Sire Stakes (2-yr-old colt pace)	Sun Lord	R. Campbell	2:06.1	\$ 4,793
N. Y. Sire Stakes (3-yr-old trot)	Clever Ward Be Spoken	Ga. Garnsey E. Pownall	2:08.1 2:07.4	\$11,600 (Div)
N. Y. Sire Stakes (3-yr-old pace)	Avon Girl See Lucky Poplar Max	L. Harner W. Myer V. Dancer	2:07.1 2:06.2 2:07.4	\$12,600 (Div)
N. Y. Sire Stakes (4-yr-old trot)	Shooter	H. Pownall	2:05.3	\$ 8,695
N. Y. Sire Stakes (4-yr-old pace)	Danny Row Girl Miss Anthony	E. Harner E. Harner	2:01 2:04	\$ 9,000 (Div)

* World Record

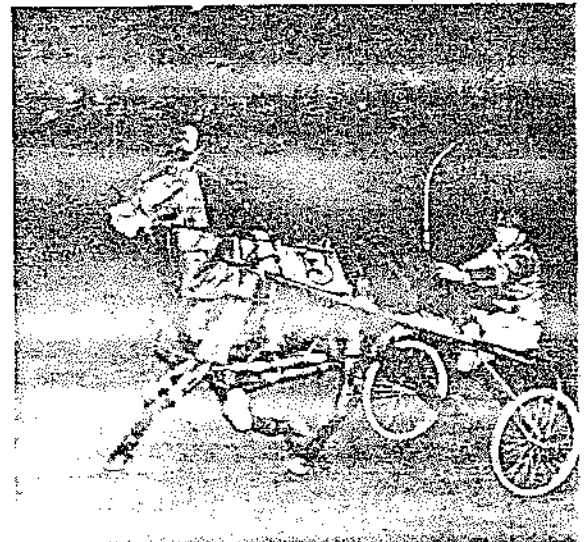
VERNON



The "new" Vernon grandstand, enclosed this year with a weather-guard window, is the star of this photo. The modernized grandstand, with a new color scheme, new heating and new speaker system, was a major factor in giving Vernon a record season in 1966.



In this composite photo, the Vernon visumatic timer reflects Bret Hanover's world record 1:54 mile in a time trial on September 2, and shows him crossing the wire with the prompter, Little Red, hot on his heels.



DeLeon Kidd, with Henry Lowe in the sulky, slips across the finish line in one of the nine straight triumphs he posted at Vernon in 1966 to crack the track record for consecutive victories.

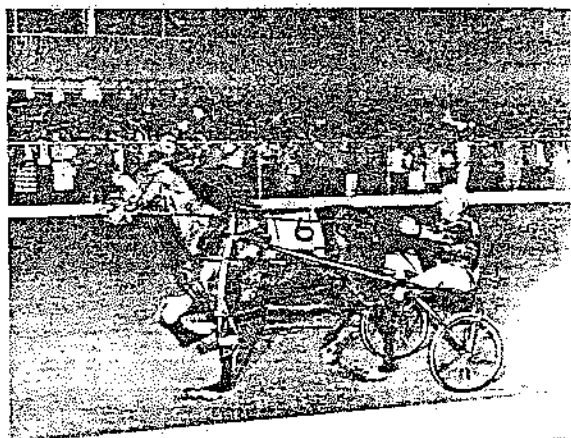
1966 Stakes
 VERNON DOWNS
 Vernon, N.Y.

<u>Stake</u>	<u>Winner</u>	<u>Driver</u>	<u>Time</u>	<u>Purse</u>
FLORA TEMPLE FILLY STAKES:				
(2-Yr. Old Trotters)	Melifer	H. Pownall, Jr.	2:04.2	\$ 5,473
(3-Yr. Old Trotters)	Meadow Janice	J. Simpson, Jr.	2:02.3	\$ 6,407
(2-Yr. Old Pacers)	Provoke	A. Hult	2:03.2	\$ 5,973
(3-Yr. Old Pacers)	Finder	H. Filion	2:04.2	\$ 6,432
THOMAS W. MURPHY TROT:				
(2-Yr. Olds)	Pomp	H. Pownall, Sr.	2:05	\$10,000
CHAIRMAN'S CUP TROT:				
(3-Yr. Olds)	Carlisle	W. Haughton	2:00.4	\$25,000
THE MEADOW LANDS PACE:				
(2-Yr. Olds)	King Omaha	Gl. Garnsey	1:59	\$11,100
THE THOMAS P. GAINES MEMORIAL PACE:				
(3-Yr. Olds)	Royal Gene Pick	J. Schroeder	1:59	\$ 9,650
AUGUST TROTTING SERIES:				
(Final Leg)	Earl Laird	J. Cruise	2:00.2	\$11,000
L.C. RYAN MEMORIAL PACING SERIES:				
(Final Leg)	Tactile	J. Chapman	1:59.3	\$11,000
HTA EMPRESS PACE:				
(Mares and Fillies)	Success Cameo	C. Young, Jr.	1:58.4	\$10,000
NEW YORK SIRES STAKES:				
(2-Yr. Filly Trot)	Duchess Rose	V. Dancer	2:06.2	\$ 7,864
(2-Yr. Colt Pace)	Bobby Ed	T. Dennis	2:01.1	\$ 8,083
(2-Yr. Filly Pace)	Molly Brook Dean	W. Andrews	2:02.4	\$ 7,461
(2-Yr. Colt Trot)	Joe Zam	R. Wilcox	2:06.2	\$ 8,410

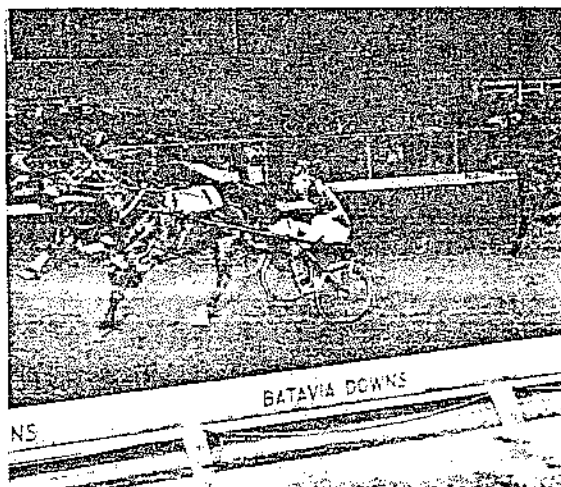
<u>Stake</u>	<u>Winner</u>	<u>Driver</u>	<u>Time</u>	<u>Purse</u>
(3-Yr. Mixed Pace)	Yankee Shadow	J. Oliver, Jr.	2:04	\$ 9,856
	Santo Tom	A. Abbatiello	2:03.4	\$ 9,756
(4-Yr. Mixed Trot)	Hicki Hi	A. Burton	2:05.1	\$10,904
(4-Yr. Mixed Pace)	T.K. Munger	R. McNulty	2:03.3	\$ 6,000
	Congress Glove	H. Story	2:01.1	\$ 6,000

DASH-WINNING CHAMPION: DeLeon Kidd, with Henry Lowe driving throughout, established a season's and track record by winning nine straight races.

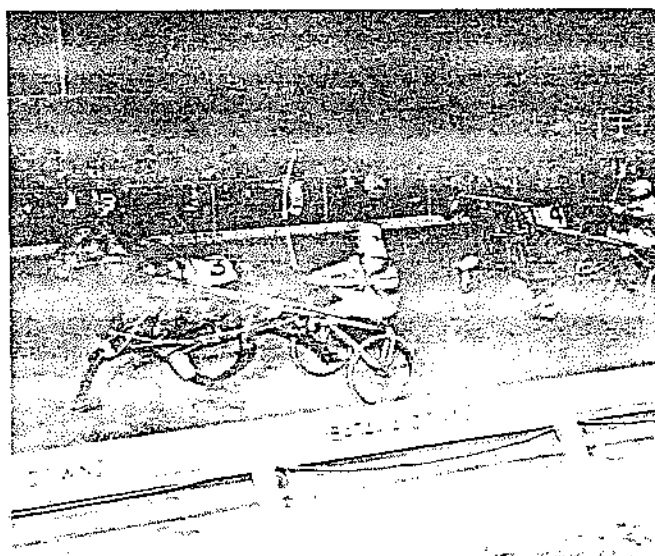
BATAVIA



Frank Ervin calmly steers Bret Hanover to a 1:58 1/5 track and season record before 15,000. The 4-year-old whipped Cardigan Bay and four other challengers in a \$25,000 Pace of the Century.



Apex Hanover, American-bred Russian-owned trotter driven by Maria Bardova, overtook Levi Harner's Lofty Hanover in a \$5,000 1 1/2 Mile International Trot.



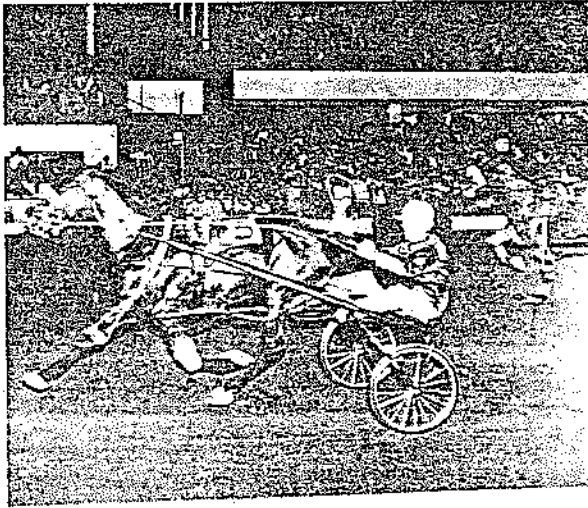
Success Cameo, Cleo Young Jr. up, held off a late rush by John Chapman's Balenzano to cop the \$10,000 HTA Empress Pace.



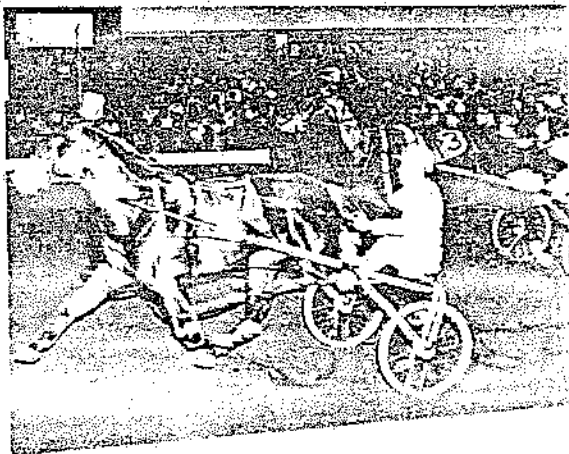
MAJOR EVENTS

\$25,000 Pace of the Century	BRET HANOVER	(F. Ervin) 1:58.1
\$19,529 N.Y. Sire Stake (3-Yr. Trot)	HARRIETTE C.	(Schroeder) 2:08.3
\$19,429 N.Y. Sire Stake (3-Yr. Pace)	NORTHWOOD	(B.Gilmour) 2:04
\$15,265 Three-Year-Old Pace Stake	ROMEO HANOVER	(G. Sholty) 2:00.3
\$14,315 Three-Year-Old Trot Stake	EILEEN EDEN	(S. Dancer) 2:05.1
\$14,100 Two-Year-Old Trot Stake	MAR CON DEMON	(A. MacRae) 2:10.2
\$12,100 Two-Year-Old Pace Stake	BERRY HILL	(Schroeder) 2:07
\$12,100 Two-Year-Old Pace Stake	TOLEDO HANOVER	(W. Myer) 2:04
\$11,284 N.Y. Sire Stake (4-Yr. Pace)	RUNNYMEDE CHUCK	(Sprouse) 2:03.1
\$11,134 N.Y. Sire Stake (4-Yr. Trot)	HICKI HI	(A. Burton) 2:06.3
\$ 8,989 N.Y. Sire Stake (2-Yr. Filly Trot)	DUCHESS ROSE	(V. Dancer) 2:10.1
\$ 8,989 N.Y. Sire Stake (2-Yr. Colt Trot)	SIR CINGLE	(McCasland) 2:11.2
\$ 8,631 N.Y. Sire Stake (2-Yr. Colt Pace)	SUN LORD	(Campbell) 2:04.3
\$ 7,968 N.Y. Sire Stake (2-Yr. Filly Pace)	MISS PRIM TRIM	(McCasland) 2:08.3
\$ 5,000 International Trot	APEX HANOVER	(M. Burdova) 3:15.2
\$ 5,000 Can-Am Series (3-Yr. Pace)	NIAGARA BYRD	(Galbraith) 2:03.3
\$ 5,000 Inaugural Pace	DANNY ROW GIL	(E. Harner) 2:01.1

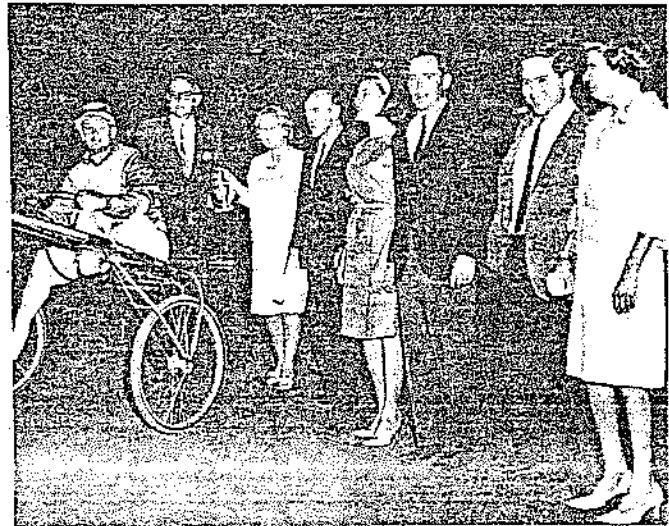
BUFFALO



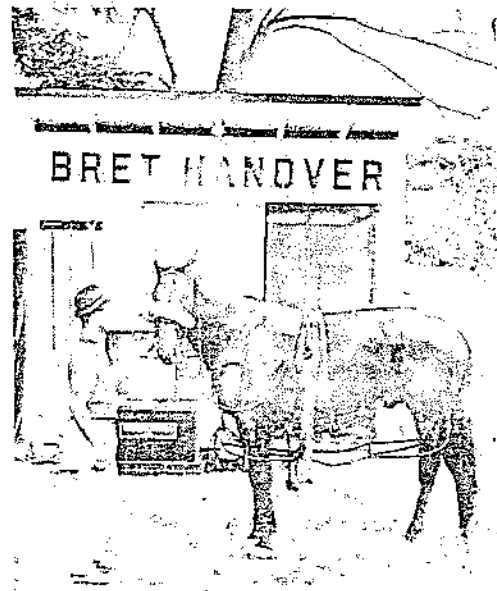
Bret Hanover driven by Frank Ervin crosses the finish line in the \$15,720 Harness Tracks of America Series, a stake witnessed by a record turnout of 12,779 fans.



Romeo Hanover posted his ninth straight victory, a 2:00 $\frac{4}{5}$ romp closing night in a \$12,933 stake. Dave Tovim drove the Dancer Hanover colt.



Buffalo Raceway's 25th anniversary race was won by the Fred Bach-reined Four Leaf. Here owner Albert Rowland accepts the trophy from Mr. and Mrs. James J. Dunnigan, Mr. and Mrs. Edward Dunnigan, James J. Dunnigan Jr., and Mrs. George A. Hanly.

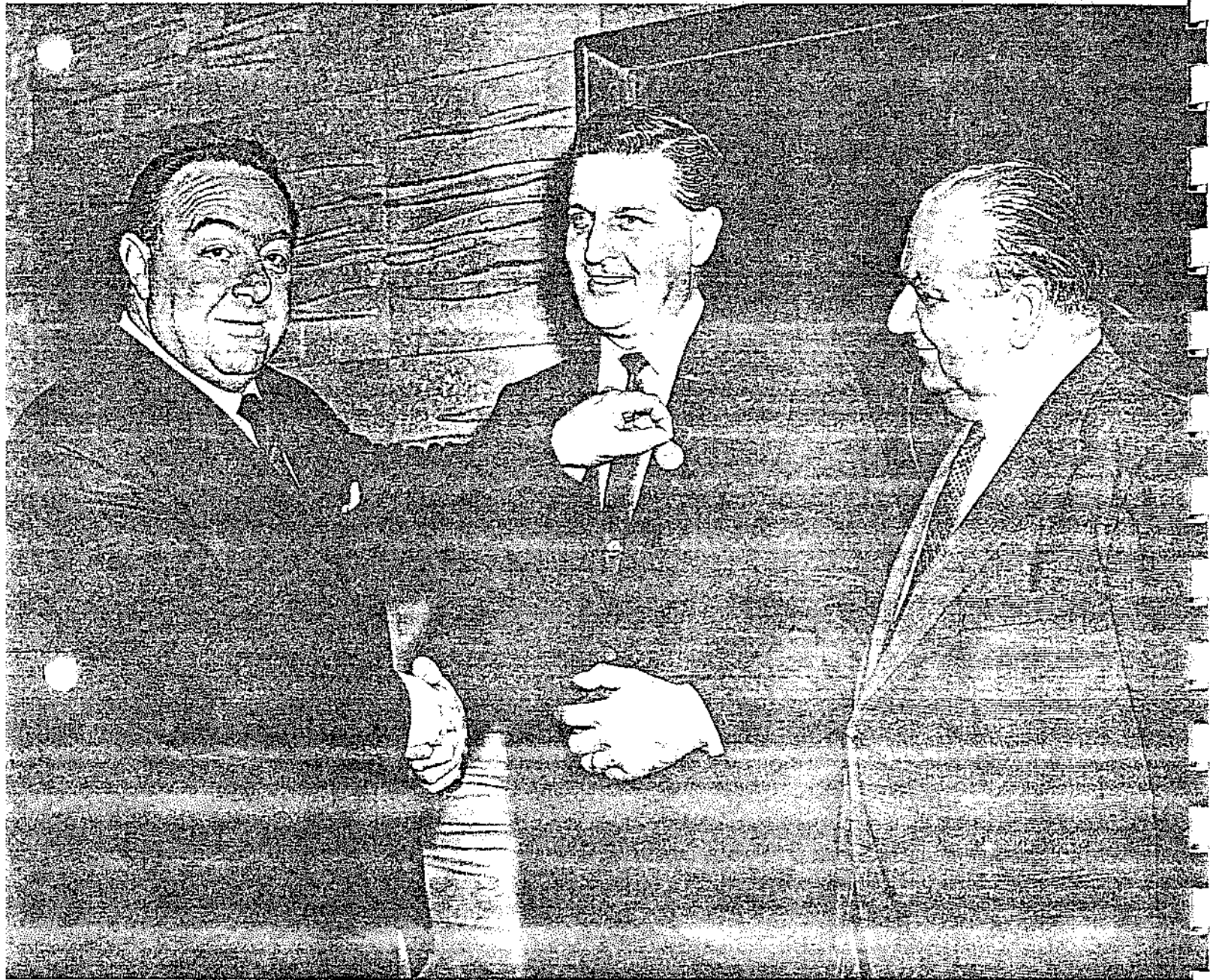


Bret Hanover enjoyed his own special stall during his visit to Buffalo Raceway. Caretaker Dave Willoughby harnesses the world champion which drew an all-time record turnout to the Raceway.

1966 Stakes
 BUFFALO RACEWAY
 Hamburg, N.Y.

<u>Stake</u>	<u>Winner</u>	<u>Driver</u>	<u>Time</u>	<u>Purse</u>
W. N. Reynolds Memorial				
2-Year-Old Filly Trot	Floral Hanover	D. Miller	2:08.3	\$14,959
2-Year-Old Filly Pace	Ember Hanover	R. Thomas	2:06	\$17,600
2-Year-Old Colt Trot	Drummond R. C.	K. Waples	2:09.1	\$19,430
2-Year-Old Colt Pace	Toledo Hanover	G. Sholty	2:07 2:06.3	\$26,150
3-Year-Old Filly Trot	Coalition	A. Hult	2:06	\$ 7,500
3-Year-Old Filly Pace	Good Candy	W. Myer	2:04	\$ 7,550
3-Year-Old Colt Trot	Polaris	D. Huff	2:04.1	\$10,600
3-Year-Old Colt Pace	Romeo Hanover	D. Tovim	2:00.4	\$12,933
The Yankey Trot	Bright Chance	T. Graham	2:06.1	\$ 5,750
The Bret Hanover Pace	Four Leaf	F. Bach	2:04.4	\$ 5,750
The Can-Am Series	Royal Gene Pick	J. Schroeder	2:02.3 2:04.3	\$ 5,000 \$ 5,000
Harness Tracks of America Pacing Series	Bret Hanover	F. Ervin	2:01.2	\$15,720
New York Sire Stakes				
2-Year-Old Filly Trot	Walter's Jeanne	W. Myer	2:09	\$ 6,793
2-Year-Old Filly Pace	Miss Prim Trim	J. McCasland	2:09.4	\$ 6,966
2-Year-Old Colt Trot	High Brink	G. Beinhauer	2:11.3	\$ 7,640
2-Year-Old Colt Pace	Bobby Ed	T. Dennis	2:06	\$ 7,453
3-Year-Old Trot	Clever Ward	Ca. Garnsey	2:09.4	\$16,164
3-Year-Old Pace	Santo Tom	A. Abbatiello	2:04.3	\$16,964
4-Year-Old Trot	Shooter	H. Pownall	2:07.1	\$ 9,727
4-Year-Old Pace	Danny Row Gil	E. Harner	2:01.2	\$12,693
	Miss Anthony	L. Harner	2:05.2	

An Award



WORLDWIDE TROTTING---Robert A. Glasser (center), Chairman of the New York State Harness Racing Commission, accepts a gold medal from UNIRE, the Italian body that governs harness and flat racing in Italy. The award was made in recognition of his service to International Harness Racing. Avv. Giuseppe Spagnolo, President of UNIRE, and Ing. A. Carena (left), Vice-President of ENCAT, the Italian breeders and owners association, made the presentation.

SUMMARY OF PARI-MUTUEL OPERATIONS AT BATAVIA Downs BY GENESSEE MONROE RACING ASSOCIATION, INC.

LICENSED FROM MARCH 10 TO APRIL 30, AND AUGUST 8 TO DECEMBER 3, 1966, INCLUDING AFTERNOONS OF SEPTEMBER 5 AND NOVEMBER 24.

PROGRAMS LICENSED	147	SEASON AVERAGES	
PROGRAMS CANCELLED	1	AVERAGE ATTENDANCE PER DAY	4,650
PROGRAMS RACED	146	AVERAGE HANDLE PER DAY	\$ 270,965
NUMBER OF RACES	1,446	AVERAGE HANDLE PER PERSON	\$ 58
ATTENDANCE	678,872	SEASON HIGHS	
HANDLE	\$ 39,560,946	ATTENDANCE	AUGUST 26 - 13,228
		HANDLE	APRIL 30 - \$ 523,206

DISPOSITION OF HANDLE

COMMISSION	\$ 5,934,141.90	TOTAL	
BREAKAGE	501,915.72	ASSOCIATION SHARE	\$ 3,635,014.26
COMMISSION AND BREAKAGE	\$ 6,436,097.62	HORSEBREEDERS FUND SHARE	\$ 125,489.18
LESS MINUS POOLS	(2,849.32)	CONSTRUCTION FUND SHARE	\$ 197,921.25
CONSTRUCTION FUND TO ASSOCIATION	\$ 6,433,248.30		\$ 219,707.09
PARI-MUTUEL INCOME	33,127,697.70		(219,707.09)
PAYABLE TO PATRONS	\$ 39,560,946.00		
HANDLE			

PERCENTAGE OF BREAKAGE TO HANDLE - 1.27%

UNCASHED WINNING TICKETS, 1965 SEASON - \$ 20,448.35

WAGERING BY POOL AND DENOMINATION

STRAIGHT	\$ 7,839,270	\$ 2	\$ 7,839,270	\$ 23,208,222	58.97%	PER RACE - \$ 24,117
PLACE	1,553,450		3,097,485	8,531,247	21.57%	PER DAY - \$ 32,106
SHOW	792,350		1,346,448	3,043,963	7.69%	PER DAY -
TOTAL RACES	\$ 10,192,070		\$ 11,933,912	\$ 34,873,432	88.15%	PER DAY -
DAILY DOUBLE	519,240		4,168,094	4,687,514	11.85%	PER DAY -
TWIN DOUBLE						
EXACTA	\$ 10,711,490		\$ 16,102,006	\$ 22,560,246	100.00%	
TRIFecta	\$ 3,032,500					
PERCENT OF HANDLE	5.3%		22.2%	100.00%		

TOTAL HANDLE

SEASON AVERAGES
BASED ON TOTAL HANDLE
PER RACE - \$ 24,117
PER DAY - \$ 32,106
PER DAY -

MARCH 10 - APRIL 30	44	PROGRAMS RACED	44	ATTENDANCE	5,009	TOTAL	\$ 13,239,381	DAILY AVERAGE	\$ 300,895
AUGUST 8 - DECEMBER 3	102		102		4,495		26,321,565		258,055

AN AFTERNOON PROGRAM AND A NIGHT PROGRAM WERE HELD ON SEPTEMBER 5. ONLY AN AFTERNOON PROGRAM WAS HELD ON NOVEMBER 24. THE PROGRAM OF NOVEMBER 4 WAS CANCELLED DUE TO SNOW. \$220,606.74, CONSISTING OF \$219,707.09 FROM COMMISSION AND BREAKAGE PLUS BANK INTEREST OF \$899.65, WAS PAID TO BATAVIA FROM THE 1966 CONSTRUCTION FUND. THIS PAYMENT REDUCES THE BALANCE DUE TO BATAVIA TO \$134,143.09.

SUMMARY OF PARI-MUTUEL OPERATIONS AT BUFFALO RACEMAY BY BUFFALO TROTTING ASSOCIATION, INC.

LICENSED FROM MAY 2 TO AUGUST 6, 1966

	SEASON AVERAGES
PROGRAMS LICENSED	84
PROGRAMS CANCELLED	0
PROGRAMS RACED	84
NUMBER OF RACES	853
ATTENDANCE	416,157
HANDLE	\$ 22,777,179

	SEASON AVERAGES
AVERAGE ATTENDANCE PER DAY	4,954
AVERAGE HANDLE PER DAY	\$ 271,157
AVERAGE HANDLE PER PERSON	\$.55

	SEASON HIGHS
ATTENDANCE	JULY 15 - 12,779
HANDLE	JULY 15 - \$ 476,029

DISPOSITION OF HANDLE

	TOTAL	STATE SHARE	ASSOCIATION SHARE	HORSEBREEDERS FUND SHARE
COMMISSION	\$ 3,416,576.85	\$ 1,316,138.36	\$ 2,100,438.49	\$ 73,046.88
BREAKAGE	292,187.28	146,093.87	146,093.41	\$ 73,046.88
COMMISSION AND BREAKAGE	\$ 3,708,764.13	\$ 1,462,232.23	\$ 2,173,485.02	\$ 73,046.88
LESS MINUS POOLS	985.83	---	985.83	---
PARI-MUTUEL INCOME	\$ 3,707,778.30	\$ 1,462,232.23	\$ 2,172,492.19	\$ 73,046.88
PAYABLE TO PATRONS	19,062,400.70	---	---	---
HANDLE	\$ 22,777,179.00	---	---	---

PERCENTAGE OF BREAKAGE TO HANDLE - 1.28%

UNCASHED WINNING TICKETS, 1965 SEASON - \$ 13,314.55

WAGERING BY POOLS AND DENOMINATIONS

	\$50	\$10	\$2	\$1	TOTAL POOLS	% OF HANDLE	SEASON AVERAGES BASED ON TOTAL POOLS
STRAIGHT	\$ 1,678,950	\$ 3,522,320	\$ 2,920,730	\$ 4,261,886	\$12,483,886	54.81%	PER RACE - \$22,426
PLACE	438,850	772,300	1,644,775	1,763,708	4,619,633	20.28%	PER DAY - \$43,494
SHOW	91,800	434,810	296,950	1,135,262	1,958,832	8.60%	PER DAY - \$12,263
TOTAL RACES	\$ 2,209,600	\$ 4,729,430	\$ 4,862,465	\$ 7,260,856	\$19,062,351	83.69%	PER DAY - \$12,263
DAILY DOUBLE	---	661,500	---	2,992,614	3,653,514	16.04%	PER DAY - \$12,263
TWIN DOUBLE	---	---	---	---	---	---	---
EXACTA	---	16,060	---	45,254	61,314	.27%	---
HANDLE	\$ 2,209,600	\$ 5,406,990	\$ 4,862,465	\$ 10,298,124	\$22,777,179	100.00%	---
PERCENT OF HANDLE	9.70%	23.74%	21.35%	45.21%	100.00%	---	---

THE DAILY DOUBLE HANDLE OF \$3,653,514 CONSISTS OF \$2,484,352 PROVIDED BY THE NORMAL DAILY DOUBLE FOR THE FULL 84 DAYS, AND \$1,169,162 PROVIDED BY A LATE DOUBLE FOR A TOTAL 56 DAYS. THE LATE DOUBLE WAS CONDUCTED FOR THE LAST TWO RACES OF EACH MONDAY THRU THURSDAY THROUGHOUT THE SEASON.

EXACTA BETTING WAS CONDUCTED FOR ONE RACE ON EACH OF FIVE DAYS NEAR THE CLOSE OF THE SEASON. DURING THREE SUCH RACES, NO STRAIGHT, PLACE, AND SHOW BETTING WAS PERMITTED.

SUMMARY OF PARI-MUTUEL OPERATIONS AT GOSHEN HISTORIC TRACK BY ORANGE COUNTY DRIVING PARK ASSOCIATION

LICENSED FROM JULY 4 TO JULY 9, 1966 - AFTERNOONS ONLY

	<u>SEASON AVERAGES</u>	
PROGRAMS LICENSED	5	
PROGRAMS CANCELLED	0	
PROGRAMS RACED	5	
NUMBER OF RACES	42	
ATTENDANCE	9,673	JULY 4 - 3,192
HANDLE	\$ 303,089	JULY 4 - \$ 100,313

DISPOSITION OF HANDLE

	TOTAL	STATE SHARE	ASSOCIATION SHARE	HORSEBREEDERS FUND SHARE
COMMISSION	\$ 45,463.35	\$ 15,154.45	\$ 30,308.90	\$ 1,198.70
BREAKAGE	4,794.78	2,397.40	1,198.68	1,198.70
COMMISSION AND BREAKAGE	\$ 50,258.13	\$ 17,551.85	\$ 31,507.58	\$ 1,198.70
LESS MINUS POOLS	4,469.33	4,469.33	—	—
PARI-MUTUEL INCOME	\$ 45,788.80	\$ 17,551.85	\$ 27,038.25	\$ 1,198.70
PAYABLE TO PATRONS HANDLE	257,300.20	—	—	—
	\$ 303,089.00	—	—	—

PERCENTAGE OF BREAKAGE TO HANDLE - 1.58%

UNCASHED WINNING TICKETS, 1965 SEASON - \$ 282.35

WAGERING BY POOLS AND DENOMINATIONS

	\$50	\$10	\$5	\$2	TOTAL POOLS	% OF HANDLE	SEASON AVERAGES BASED ON TOTAL POOLS
STRAIGHT	\$ 46,750	\$ 61,540	\$ 24,400	\$ 59,828	\$192,518	63.52%	—
PLACE	15,650	19,170	10,690	26,926	72,436	23.90%	—
SHOW	6,450	6,670	3,645	21,370	38,135	12.58%	—
TOTAL RACES	\$ 68,850	\$ 87,380	\$ 38,735	\$108,124	\$303,089	100.00%	—
DAILY DOUBLE	—	—	—	—	—	—	PER RACE - \$ 7,216
TWIN DOUBLE	—	—	—	—	—	—	PER DAY - —
EXACTA	—	—	—	—	—	—	PER DAY - —
HANDLE	\$ 68,850	\$ 87,380	\$ 38,735	\$108,124	\$303,089	100.00%	PER DAY - —
PERCENT OF HANDLE	22.72%	28.83%	12.78%	35.67%	100.00%	—	—

ONLY 5 DAYS OF RACING CONTEMPLATED, ONE EXTRA DAY PROVIDED FOR POSTPONEMENT ON ACCOUNT OF RAIN.

SUMMARY OF PARI-MUTUEL OPERATIONS AT MONTICELLO RACEWAY BY SULLIVAN COUNTY HARNES RACING ASSOCIATION, INC.

LICENSED FROM MAY 5 TO SEPTEMBER 17, 1966 INCLUDING AFTERNOONS OF JULY 2, JULY 23, AUGUST 13, AND SEPTEMBER 3

	<u>SEASON AVERAGES</u>	
PROGRAMS LICENSED	121	
PROGRAMS CANCELLED	0	
PROGRAMS RACED	121	
NUMBER OF RACES	1,097	
ATTENDANCE	669,889	5,536
HANDLE	\$ 40,601,588	\$ 335,550
		61

	<u>SEASON HIGHS</u>	
ATTENDANCE		JULY 16 - 13,711
HANDLE		JULY 16 - \$ 718,314

DISPOSITION OF HANDLE

	TOTAL	STATE SHARE	ASSOCIATION SHARE	HORSEBREEDERS FUND SHARE
COMMISSION	\$ 6,090,238.20	\$ 2,548,281.78	\$ 3,541,956.42	\$ 103,467.89
BREAKAGE	413,870.90	206,935.77	103,467.24	103,467.89
COMMISSION AND BREAKAGE	\$ 6,504,109.10	\$ 2,755,217.55	\$ 3,645,423.66	\$ 103,467.89
LESS MINUS POOLS	4,571.40		4,571.40	
PARI-MUTUEL INCOME	\$ 6,499,537.70	\$ 2,755,217.55	\$ 3,640,852.26	\$ 103,467.89
PAYABLE TO PATRONS	34,102,050.30			
HANDLE	\$ 40,601,588.00			

PERCENTAGE OF BREAKAGE TO HANDLE - 1.02%

UNCASHED WINNING TICKETS, 1965 SEASON - \$ 29,197.60

WAGERING BY POOLS AND DENOMINATIONS

	\$50	\$10	\$5	\$2	TOTAL POOLS	% OF HANDLE	SEASON AVERAGES BASED ON TOTAL POOLS
STRAIGHT	\$ 3,323,850	\$ 5,001,980	\$ 3,677,015	\$ 6,951,786	\$18,954,631	46.65%	PER RACE - \$ 26,399
PLACE	932,450	959,570	2,084,725	3,166,036	7,142,781	17.59%	PER DAY - \$ 37,680
SHOW	329,300	563,710	342,380	1,561,048	2,796,438	6.89%	PER DAY - \$ 34,375
TOTAL RACES	\$ 4,585,600	\$ 6,525,260	\$ 6,104,120	\$11,678,870	\$28,893,850	71.16%	PER DAY - \$ 24,703
DAILY DOUBLE	---	703,720	---	3,855,580	4,559,300	11.23%	
TWIN DOUBLE	---	841,140	---	3,318,284	4,159,424	10.25%	
EXACTA	---	597,150	---	2,391,864	2,989,014	7.36%	
HANDLE	\$ 4,585,600	\$ 8,667,270	\$ 6,104,120	\$21,274,598	\$40,601,588	100.00%	
PERCENT OF HANDLE	11.29%	21.35%	15.04%	52.32%	100.00%		

SUMMARY OF PARI-MUTUEL OPERATIONS AT ROSELLE RACEWAY BY ROOSEVELT RACEWAY, INC.

LICENSED FROM JANUARY 3 TO MARCH 3, MAY 25 TO JULY 23, AND OCTOBER 19 TO DECEMBER 15, 1966

PROGRAMS LICENSED	154	SEASON AVERAGES
PROGRAMS CANCELLED	0	AVERAGE ATTENDANCE PER DAY
PROGRAMS RACED	154	AVERAGE HANDLE PER DAY
		AVERAGE HANDLE PER PERSON
NUMBER OF RACES	1,386	SEASON HIGHS
ATTENDANCE	3,088,839	ATTENDANCE JULY 9 -
HANDLE	\$ 268,296,838	HANDLE DECEMBER 15 -

DISPOSITION OF HANDLE

COMMISSION	\$ 40,244,525.70	TOTAL	
BREAKAGE	\$ 2,929,389.22	STATE SHARE	
COMMISSION AND BREAKAGE	\$ 43,173,914.92	\$ 26,201,652.18	ASSOCIATION SHARE
LESS MINUS POOLS	17,056,12	\$ 1,464,694.64	\$ 14,042,873.52
PARI-MUTUEL INCOME	\$ 43,156,858.80	\$ 27,666,346.82	\$ 732,347.71
		\$ 27,666,346.82	\$ 732,347.71
PAYABLE TO PATRONS	\$ 225,139,979.20		
HANDLE	\$ 268,296,838.00		

PERCENTAGE OF BREAKAGE TO HANDLE - 1.09%

UNCASHED WINNING TICKETS, 1965 SEASON - \$ 95,459.20

WAGERING BY POOLS AND DENOMINATIONS

STRAIGHT	\$ 9,222,500	\$ 29,607,600	\$ 53,445,870	\$ 11,581,220	\$ 45,048,254	\$ 148,905,444	55.50%	SEASON AVERAGES
PLACE	1,694,100	7,786,000	8,954,530	11,581,220	12,216,656	42,232,506	15.74%	BASED ON TOTAL POOLS
SHOW	713,200	2,943,050	4,615,450	5,001,490	5,001,490	13,271,190	4.92%	PER RACE - \$ 147,481
TOTAL RACES	\$ 11,629,800	\$ 40,334,650	\$ 67,015,850	\$ 23,162,440	\$ 62,266,400	\$ 204,409,140	76.19%	PER DAY - \$ 133,152
DAILY DOUBLE			6,994,030		13,511,448	20,505,478	7.64%	PER DAY - \$ 168,935
TWIN DOUBLE			8,609,750		17,406,234	26,015,984	9.70%	PER DAY - \$ 112,768
EXACTA			7,862,740		9,593,436	17,269,236	6.47%	
HANDLE	\$ 11,629,800	\$ 40,334,650	\$ 90,482,370	\$ 23,162,440	\$ 102,687,578	\$ 268,296,838	100.00%	
PERCENT OF HANDLE	4.34%	15.03%	33.73%	8.63%	38.27%	100.00%		

ATTENDANCE AND HANDLE BY MEET

MEET	PROGRAMS RACED	TOTAL ATTENDANCE	DAILY AVERAGE	TOTAL HANDLE	DAILY AVERAGE
JANUARY 3 - MARCH 3	52	970,929	18,672	\$ 90,324,064	\$ 1,737,001
MAY 25 - JULY 23	52	1,191,978	22,923	\$ 94,448,308	\$ 1,816,314
OCTOBER 19 - DECEMBER 15	50	925,932	18,519	\$ 83,524,466	\$ 1,670,489
TWIN DOUBLE HANDLE: NO OPTION TWIN - 104 DAYS, JANUARY 3 TO JULY 23				\$ 18,222,630	
OPTION TWIN - 50 DAYS, OCTOBER 19 TO DECEMBER 15				\$ 7,793,554	
EXACTA HANDLE: 9TH RACE, 154 DAYS, JANUARY 3 TO DECEMBER 15				\$ 12,811,100	
7TH RACE, 50 DAYS, OCTOBER 19 TO DECEMBER 15				\$ 4,555,136	

SUMMARY OF PARI-MUTUEL OPERATIONS AT SARATOGA RACEWAY BY SARATOGA HARNESS RACING ASSOCIATION, INC.

LICENSED FROM APRIL 14 TO SEPTEMBER 24, 1966 INCLUDING AFTERNOONS OF MAY 30, JULY 4, AND SEPTEMBER 5

	<u>SEASON AVERAGES</u>	<u>SEASON HIGHS</u>
PROGRAMS LICENSED	144	
PROGRAMS CANCELLED	1	
PROGRAMS RACED	140	
NUMBER OF RACES	1,393	
ATTENDANCE	490,715	7,432
HANDLE	\$ 27,256,253	\$ 350,987
	AVERAGE ATTENDANCE PER DAY	AUGUST 13 -
	AVERAGE HANDLE PER DAY	\$ 3,505
	AVERAGE HANDLE PER PERSON	\$ 194,688
	AVERAGE HANDLE PER PERSON	\$ 56

DISPOSITION OF HANDLE

	TOTAL	STATE SHARE	ASSOCIATION SHARE	HORSEBREEDERS FUND SHARE
COMMISSION	\$ 4,088,437.95	\$ 1,459,276.92	\$ 2,629,161.03	\$ 93,915.38
BREAKAGE	375,661.15	187,830.95	92,914.82	93,915.38
COMMISSION AND BREAKAGE	4,464,099.10	1,647,107.87	2,723,075.85	93,915.38
LESS MINUS POOLS	25,850.80	25,850.80	25,850.80	25,850.80
PARI-MUTUEL INCOME	\$ 4,438,248.30	\$ 1,647,107.87	\$ 2,697,225.05	\$ 93,915.38
PAYABLE TO PATRONS	22,818,004.70			
HANDLE	\$ 27,256,253.00			

PERCENTAGE OF BREAKAGE TO HANDLE - 1.38%

UNCASHED WINNING TICKETS, 1965 SEASON - \$ 13,212.00

WAGERING BY POOLS AND DENOMINATIONS

	\$50	\$10	\$2	TOTAL POOLS	% OF HANDLE	SEASON AVERAGES BASED ON TOTAL POOLS
STRAIGHT	\$ 1,621,700	\$ 6,154,900	\$ 2,467,185	\$ 15,230,239	55.88%	
PLACE	550,800	1,590,850	1,064,195	5,629,353	20.65%	
SHOW	286,000	516,410	1,704,046	3,124,691	11.50%	
TOTAL RACES	\$ 2,458,500	\$ 8,262,160	\$ 4,159,615	\$ 23,994,283	88.03%	PER RACE - \$ 17,225
DAILY DOUBLE		370,760	2,891,210	3,261,970	11.97%	PER DAY - \$ 23,300
TWIN DOUBLE						PER DAY -
EXACTA						PER DAY -
HANDLE	\$ 2,458,500	\$ 8,632,920	\$ 4,159,615	\$ 27,256,252	100.00%	
PERCENT OF HANDLE	9.02%	31.67%	15.26%	100.00%		
			44.05%			

AFTERNOON PROGRAMS INSTEAD OF EVENING PROGRAMS WERE HELD ON MAY 30, JULY 4, AND SEPTEMBER 5. THE PROGRAM OF JUNE 25 WAS CANCELLED BECAUSE OF TOTE EQUIPMENT FAILURE.

SUMMARY OF PARI-MUTUEL OPERATIONS AT VERNON DOWNS BY MID-STATE RACEWAY, INC.

LICENSED FROM MAY 19 TO OCTOBER 29, 1966

PROGRAMS LICENSED	141	SEASON AVERAGES	
PROGRAMS CANCELLED	0	AVERAGE ATTENDANCE PER DAY	4,658
PROGRAMS RACED	141	AVERAGE HANDLE PER DAY	\$ 237,536
NUMBER OF RACES	1,269	AVERAGE HANDLE PER PERSON	\$ 51
ATTENDANCE	656,837	SEASON HIGHS	
HANDLE	\$ 33,492,540	ATTENDANCE	SEPTEMBER 2 - 10,591
		HANDLE	OCTOBER 29 - \$ 440,892

DISPOSITION OF HANDLE

	TOTAL	STATE SHARE	ASSOCIATION SHARE	HORSEREDERS FUND SHARE
COMMISSION	\$ 5,023,881.00	\$ 1,881,749.37	\$ 3,142,131.63	
BREAKAGE	344,424.50	172,212.64	86,106.33	\$ 86,106.33
COMMISSION AND BREAKAGE	\$ 5,368,305.50	\$ 2,053,962.01	\$ 3,228,237.16	\$ 86,106.33
LESS MINUS POOLS	2,274.70		2,274.70	
PARI-MUTUEL INCOME	\$ 5,366,030.80	\$ 2,053,962.01	\$ 3,225,962.46	\$ 86,106.33
PAYABLE TO PATRONS HANDLE	28,126,509.20			
	\$ 33,492,540.00			

PERCENTAGE OF BREAKAGE TO HANDLE - 1.38%

UNCASHED WINNING TICKETS, 1965 SEASON - \$ 19,693.85

WAGERING BY POOLS AND DENOMINATIONS

	\$50	\$10	\$5	\$2	TOTAL POOLS	% OF HANDLE	SEASON AVERAGES BASED ON TOTAL POOLS
STRAIGHT	\$ 1,094,900	\$ 4,453,080	\$ 2,591,270	\$ 5,280,082	\$13,419,332	40.06%	PER RACE - \$ 17,494
PLACE	413,000	1,239,690	1,642,945	2,933,470	6,229,105	18.60%	PER DAY - \$ 33,568
SHOW	106,450	555,770	325,445	1,563,798	2,551,463	7.62%	PER DAY - \$ 24,411
TOTAL RACES	\$ 1,614,350	\$ 6,248,540	\$ 4,559,660	\$ 9,777,350	\$22,199,900	66.28%	PER DAY - \$ 22,111
DAILY DOUBLE		672,500		4,060,554	4,733,054	14.13%	
TWIN DOUBLE		573,660		2,868,310	3,441,970	10.28%	
EXACTA		496,700		2,620,916	3,117,616	9.31%	
HANDLE	\$ 1,614,350	\$ 7,921,400	\$ 4,559,660	\$19,227,130	\$33,492,540	100.00%	
PERCENT OF HANDLE	4.82%	23.86%	13.61%	57.71%	100.00%		

TWIN DOUBLE HANDLE: NO OPTION TWIN - 63 DAYS, MAY 19 TO JULY 30 - \$ 1,464,708
 OPTION TWIN - 78 DAYS, AUGUST 1 TO OCTOBER 29 - \$ 1,977,262

SUMMARY OF PARI-MUTUEL OPERATIONS AT YONKERS RACEWAY BY YONKERS RACEWAY, INC.

LICENSED FROM MARCH 4 TO MAY 24 AND JULY 25 TO OCTOBER 18, 1966

PROGRAMS LICENSED	144	SEASON AVERAGES	
PROGRAMS CANCELLED	0	AVERAGE ATTENDANCE PER DAY	22,572
PROGRAMS RACED	144	AVERAGE HANDLE PER DAY	\$ 1,947,897
NUMBER OF RACES	1,311	AVERAGE HANDLE PER PERSON	\$ 86
ATTENDANCE	3,250,433	SEASON HIGHS	
HANDLE	\$ 280,497,122	ATTENDANCE AUGUST 20 -	36,980
		HANDLE MAY 20 -	\$ 2,802,745

DISPOSITION OF HANDLE

COMMISSION	\$ 42,074,568.30	STATE SHARE	\$ 27,758,683.42	ASSOCIATION SHARE	\$ 14,315,884.88	HORSEBREEDERS FUND SHARE	\$ 782,310.95
BREAKAGE	\$ 3,129,242.80	TOTAL	\$ 45,263,811.10		\$ 15,098,121.93		\$ 782,310.95
COMMISSION AND BREAKAGE	\$ 45,263,811.10		\$ 47,491.40		\$ 47,491.40		\$ 782,310.95
LESS MINUS POOLS	\$ 47,491.40		\$ 45,156,319.70		\$ 15,050,630.53		
PARI-MUTUEL INCOME	\$ 45,156,319.70						
PAYABLE TO PATRONS	\$ 235,340,802.30						
HANDLE	\$ 280,497,122.00						

PERCENTAGE OF BREAKAGE TO HANDLE - 1.12%

UNCASHED WINNING TICKETS, 1965 SEASON - \$ 94,308.60

MAGING BY POOLS AND DENOMINATIONS

STRAIGHT	\$ 46,870,650	\$ 50	\$ 45,670,890	\$ 32,442,795	\$ 45,300,222	\$ 170,284,557	60.71%	SEASON AVERAGES
PLACE	10,830,300		6,774,240	16,605,520	14,336,914	48,546,974	17.31%	BASED ON TOTAL POOLS
SHOW	4,522,400		3,781,200	2,196,052	3,784,884	14,284,539	5.09%	
TOTAL RACES	\$ 62,223,350		\$ 56,226,330	\$ 51,244,370	\$ 63,422,020	\$ 233,116,070	83.11%	PER RACE - \$ 177,815
DAILY DOUBLE			6,282,400		14,930,242	21,212,642	7.56%	PER DAY - \$ 147,310
TWIN DOUBLE			7,972,740		18,195,670	26,168,410	9.33%	PER DAY - \$ 201,295
EXACTA								
HANDLE	\$ 62,223,350		\$ 70,781,470	\$ 51,244,370	\$ 96,547,922	\$ 280,497,122	100.00%	
PERCENT OF HANDLE	22.18%		25.13%	18.27%	34.42%	100.00%		

ATTENDANCE AND HANDLE BY MEET

MEET	PROGRAMS RACED	TOTAL ATTENDANCE	TOTAL HANDLE
MARCH 4 - MAY 24	70	1,598,173	\$ 144,028,823
JULY 25 - OCTOBER 18	74	1,652,260	\$ 136,468,299
		DAILY AVERAGE	DAILY AVERAGE
		22,831	\$ 2,057,555
		22,328	\$ 1,844,166

TWIN DOUBLE HANDLE: NO OPTION TWIN - 124 DAYS, MARCH 4 TO SEPTEMBER 24 \$25,204,626
 OPTION TWIN - 6 DAYS, SEPTEMBER 26 TO OCTOBER 1 \$ 963,784

SUMMARY OF WAGERING BY POOLS - 1966

TRACK	STRAIGHT		PLACE		SHOW		DAILY DOUBLE		TWIN DOUBLE		EXACTA		HANDLE	
	AMOUNT	%	AMOUNT	%	AMOUNT	%	AMOUNT	%	AMOUNT	%	AMOUNT	%	AMOUNT	%
BATAVIA DOWNS	\$ 23,298,222	58.89%	\$ 8,531,247	21.57%	\$ 3,043,963	7.69%	\$ 4,687,514	11.85%	---	---	---	---	\$ 39,560,946	100%
BUFFALO RACEWAY	12,483,886	54.81	4,619,633	20.28	1,958,832	8.60	3,653,514	16.04	---	---	\$ 61,314	.27%	22,777,179	100
GOSHEN HALF-MILE	192,518	63.52	72,436	23.90	38,135	12.58	---	---	---	---	---	---	303,089	100
MONTICELLO RACEWAY	18,954,631	46.68	7,142,781	17.59	2,796,438	6.89	4,559,300	11.23	\$ 4,159,424	10.25%	2,989,014	7.36	40,603,588	100
ORANGE AT SARATOGA	5,042,953	56.64	1,743,861	19.58	894,920	10.05	1,222,254	13.73	---	---	---	---	8,903,788	100
ROOSEVELT RACEWAY	148,905,444	55.50	42,232,506	15.74	13,271,190	4.95	20,505,478	7.64	26,015,984	9.70	17,366,236	6.47	268,296,838	100
SARATOGA RACEWAY	15,230,239	55.88	5,629,353	20.65	3,134,691	11.50	3,261,970	11.97	---	---	---	---	27,256,253	100
VERNON DOWNS	13,419,332	48.66	6,229,105	18.60	2,591,463	7.62	4,733,054	14.13	3,441,970	10.28	3,117,616	9.31	33,492,540	100
YONKERS RACEWAY	170,284,557	60.71	48,546,974	17.31	14,284,539	5.09	21,212,642	7.56	26,168,410	9.33	---	---	280,497,122	100
ALL TRACKS COMBINED	\$407,811,782	56.51%	\$124,747,896	17.29%	\$41,973,971	5.82%	\$63,835,726	8.84%	\$59,785,788	8.28%	\$23,534,180	3.26%	\$721,689,343	100%

SUMMARY OF DENOMINATIONAL WAGERING - 1966

	ALL TRACKS COMBINED	BATAVIA DOWNS	BUFFALO RACEWAY	CCSHEN HISTORIC HALF-MILE	MONTICELLO RACEWAY	ORANGE COUNTY AT SARATOGA RACEWAY	ROOSEVELT RACEWAY	SARATOGA RACEWAY	VERNON DOWNS	YONKERS RACEWAY
\$100										
STRAIGHT PLACE	\$ 9,222,500	\$ 2,858,200	\$ 1,678,950	\$ 46,750	\$ 3,323,850	\$ 480,500	\$ 29,607,600	\$ 1,621,700	\$ 1,094,900	\$ 46,870,650
SHOW	1,694,100	795,800	438,850	15,650	932,450	138,450	7,786,000	550,800	413,000	10,830,300
TOTAL	<u>713,200</u>	<u>21,800</u>	<u>43,450</u>	<u>6,450</u>	<u>329,300</u>	<u>43,450</u>	<u>2,941,050</u>	<u>286,000</u>	<u>106,450</u>	<u>4,522,400</u>
% OF HANDLE	\$ 11,629,800	\$ 3,932,600	\$ 2,209,600	\$ 68,850	\$ 4,585,600	\$ 662,400	\$ 40,334,650	\$ 2,456,500	\$ 1,614,350	\$ 62,223,350
	1.61%	9.94%	9.70%	22.72%	11.29%	7.44%	15.03%	9.02%	4.82%	22.18%
\$ 50										
STRAIGHT PLACE	\$ 87,583,100	\$ 7,839,270	\$ 3,522,320	\$ 61,540	\$ 5,001,980	\$ 2,046,700	\$ 53,445,870	\$ 6,154,900	\$ 4,453,080	\$ 45,670,890
SHOW	21,901,300	1,553,450	772,300	19,170	959,570	510,450	8,954,530	1,590,850	1,239,690	6,774,240
TOTAL	<u>8,602,500</u>	<u>799,350</u>	<u>434,810</u>	<u>6,670</u>	<u>563,710</u>	<u>153,250</u>	<u>4,615,450</u>	<u>516,410</u>	<u>555,770</u>	<u>3,781,200</u>
% OF HANDLE	\$ 118,089,900	\$ 519,420	\$ 661,500	\$ 8,850	\$ 703,720	\$ 139,250	\$ 6,994,030	\$ 370,760	\$ 672,900	\$ 6,282,400
	16.36%	9.94%	9.70%	22.72%	11.29%	7.44%	15.03%	9.02%	4.82%	22.18%
\$ 10										
STRAIGHT PLACE	\$ 128,196,550	\$ 7,839,270	\$ 3,522,320	\$ 61,540	\$ 5,001,980	\$ 2,046,700	\$ 53,445,870	\$ 6,154,900	\$ 4,453,080	\$ 45,670,890
SHOW	22,374,250	1,553,450	772,300	19,170	959,570	510,450	8,954,530	1,590,850	1,239,690	6,774,240
TOTAL	<u>11,426,620</u>	<u>799,350</u>	<u>434,810</u>	<u>6,670</u>	<u>563,710</u>	<u>153,250</u>	<u>4,615,450</u>	<u>516,410</u>	<u>555,770</u>	<u>3,781,200</u>
% OF HANDLE	\$ 17,997,290	\$ 519,420	\$ 661,500	\$ 8,850	\$ 703,720	\$ 139,250	\$ 6,994,030	\$ 370,760	\$ 672,900	\$ 6,282,400
	8.97%	9.94%	9.70%	22.72%	11.29%	7.44%	15.03%	9.02%	4.82%	22.18%
\$ 5										
STRAIGHT PLACE	\$ 61,666,670	\$ 5,097,770	\$ 2,920,730	\$ 24,400	\$ 3,677,015	\$ 864,285	\$ 11,581,220	\$ 2,467,185	\$ 2,591,270	\$ 32,442,795
SHOW	36,093,050	3,897,485	1,644,775	10,690	2,034,725	361,495	11,581,220	1,064,195	1,642,945	16,605,520
TOTAL	<u>4,622,745</u>	<u>612,295</u>	<u>296,960</u>	<u>3,645</u>	<u>342,280</u>	<u>210,430</u>	<u>23,162,440</u>	<u>528,235</u>	<u>325,445</u>	<u>2,196,055</u>
% OF HANDLE	\$ 104,382,465	\$ 8,814,850	\$ 4,862,465	\$ 38,735	\$ 6,104,120	\$ 1,436,210	\$ 4,159,615	\$ 4,159,615	\$ 4,553,660	\$ 51,244,370
	14.47%	22.28%	21.35%	12.78%	15.04%	16.13%	8.63%	15.26%	13.61%	18.27%
\$ 2										
STRAIGHT PLACE	\$ 121,142,962	\$ 7,502,982	\$ 4,361,886	\$ 59,828	\$ 6,971,786	\$ 1,651,468	\$ 45,048,254	\$ 4,986,454	\$ 5,280,082	\$ 45,300,222
SHOW	40,685,196	3,084,512	1,763,708	26,926	3,166,036	733,466	12,216,656	2,423,508	2,933,470	14,336,914
TOTAL	<u>16,605,906</u>	<u>1,346,418</u>	<u>1,135,262</u>	<u>21,370</u>	<u>1,561,048</u>	<u>487,590</u>	<u>5,001,490</u>	<u>1,704,046</u>	<u>1,563,798</u>	<u>3,781,884</u>
% OF HANDLE	\$ 47,492,146	\$ 4,168,094	\$ 2,992,014	\$ 3,855,580	\$ 3,318,284	\$ 1,083,004	\$ 13,511,448	\$ 2,891,210	\$ 4,060,554	\$ 14,930,242
	41.78%	49.8%	45.25%	35.67%	31.8%	31.8%	17.406,234	2,868,310	2,620,916	18,195,670
HANDLE	\$ 282,276,238	\$ 16,102,006	\$ 10,298,124	\$ 108,124	\$ 21,244,598	\$ 3,955,528	\$ 102,687,578	\$ 12,065,218	\$ 19,327,130	\$ 96,547,932
% OF COMBINED	39.11%	40.70%	45.21%	35.67%	52.32%	44.43%	38.27%	44.05%	57.71%	34.42%
	\$ 721,689,343	\$ 39,560,946	\$ 22,777,179	\$ 303,089	\$ 40,601,588	\$ 8,903,788	\$ 268,296,838	\$ 27,256,253	\$ 33,492,540	\$ 280,497,122
	100.00%	5.48%	3.16%	.04%	5.62%	1.23%	37.18%	3.78%	4.64%	36.87%

SUMMARY OF HANDLE BY RACE, DAILY DOUBLE, TWIN DOUBLE, AND EXACTA - 1966

RACE NUMBER	ALL TRACKS COMBINED	BATAVIA		BUFFALO		GOSHEN		ORANGE COUNTY AT SARATOGA		SARATOGA		VERNON		YONKERS	
		DOWN	RACEWAY	HALF-MILE	HISTORIC	MONTICELLO	RACEWAY	RACEWAY	RACEWAY	DOWN	RACEWAY	DOWN	RACEWAY	DOWN	RACEWAY
1	\$ 29,737,237	\$ 1,389,819	\$ 727,780	\$ 43,454	\$ 1,713,376	\$ 306,470	\$ 11,319,750	\$ 990,090	\$ 1,244,819	\$ 12,001,679					
2	49,174,404	2,306,104	1,385,759	31,051	2,642,480	522,248	18,863,830	1,595,692	2,008,106	19,819,134					
3	65,808,666	3,223,954	1,828,123	38,042	3,476,625	688,237	25,043,310	2,231,107	2,843,671	26,437,597					
4	72,123,023	3,524,918	2,032,964	40,035	3,758,226	764,674	27,333,048	2,437,369	2,116,959	30,114,830					
5	73,709,777	3,817,730	2,060,518	31,629	3,166,547	820,855	28,107,036	2,623,350	2,690,086	30,392,026					
6	66,159,728	4,019,952	2,205,558	39,287	3,700,394	858,712	23,738,168	2,708,583	3,381,263	25,507,811					
7	70,315,858	4,136,578	2,403,536	39,973	3,796,461	881,435	24,454,640	2,808,691	3,096,152	28,698,392					
8	73,091,309	4,297,665	2,396,209	25,569	4,025,795	917,561	26,704,342	2,841,320	3,167,715	28,715,133					
9	61,411,091	4,288,586	1,851,066	11,571	2,439,519	947,874	18,847,016	2,891,120	1,651,129	28,483,210					
10	12,726,130	3,868,126	1,894,412	2,478	174,427	973,468	—	2,866,961	—	2,946,258					
11	276,426	—	276,426	—	—	—	—	—	—	—					
STRAIGHT, PLACE, AND SHOW															
	\$574,533,649	\$34,873,432	\$19,062,351	\$303,082	\$38,893,850	\$7,681,534	\$204,409,140	\$23,994,283	\$22,199,900	\$233,116,070					
DAILY DOUBLE															
	63,835,726	4,687,514	3,653,514	—	4,559,300	1,222,254	20,505,478	3,261,970	4,733,054	21,212,642					
TWIN DOUBLE															
	59,785,788	—	—	—	4,159,424	—	26,015,984	—	3,441,970	26,168,410					
EXACTA															
	23,534,180	—	61,314	—	2,989,014	—	17,366,236	—	3,117,616	—					
HANDLE															
	\$721,689,343	\$39,560,946	\$22,777,179	\$303,089	\$40,601,588	\$8,903,788	\$268,296,838	\$27,256,253	\$33,492,540	\$280,497,122					

WINNING FAVORITES REPORT - 1966

TRACK	PROGRAMS RACED	NUMBER OF RACES	OFFICIAL PLACING OF FAVORITES				OUT OF THE MONEY NUMBER	%
			FIRST NUMBER	SECOND NUMBER	THIRD NUMBER	OUT OF THE MONEY NUMBER		
BATAVIA DOWNS	146	1,446	538	297	169	442	30.57%	
BUFFALO RACEWAY	84	853	321	163	90	279	32.71	
GOSHEN HISTORIC HALF-MILE	5	42	20	8	2	12	28.57	
MONTICELLO RACEWAY	121	1,097	396	222	140	339	30.90	
ORANGE COUNTY AT SARATOGA RACEWAY	54	539	171	118	67	183	33.95	
ROOSEVELT RACEWAY	154	1,386	493	259	169	465	33.55	
SARATOGA RACEWAY	140	1,393	541	265	160	427	30.65	
VERNON DOWNS	141	1,269	459	244	151	415	32.70	
YONKERS RACEWAY	144	1,311	468	223	186	434	33.10	
ALL TRACKS COMBINED	989	9,336	3,407	1,799	1,134	2,996	32.09%	

TEN YEAR COMPARISON OF WAGERING BY POOLS, ALL TRACKS COMBINED - 1957-1966

	STRAIGHT		PLACE		SHOW		DAILY DOUBLE		TWIN DOUBLE		EXACTA		HANDLE
	AMOUNT	% OF HANDLE	AMOUNT	% OF HANDLE	AMOUNT	% OF HANDLE	AMOUNT	% OF HANDLE	AMOUNT	% OF HANDLE	AMOUNT	% OF HANDLE	
1957	\$235,587,053	60.76%	\$84,720,708	21.85%	\$34,667,143	8.94%	\$32,782,486	8.45%	---	---	---	---	\$387,757,390
1958	283,484,639	60.91	102,873,644	22.11	39,486,620	8.48	39,539,748	8.50	---	---	---	---	465,384,651
1959	298,880,968	61.14	107,449,709	21.98	40,452,517	8.27	42,077,506	8.61	---	---	---	---	488,860,700
1960	307,737,156	60.86	109,912,964	21.74	42,638,444	8.43	45,374,847	8.97	---	---	---	---	505,663,411
1961	315,292,819	61.01	111,372,173	21.55	43,187,109	8.36	46,937,970	9.08	---	---	---	---	516,790,071
1962	326,302,300	61.55	112,015,072	21.13	42,301,254	7.98	49,490,618	9.34	---	---	---	---	530,109,244
1963	354,722,974	60.31	118,686,068	20.18	42,218,063	7.18	52,849,568	8.99	\$19,628,430	3.34%	---	---	588,105,103
1964	388,276,212	57.15	127,741,333	18.80	45,217,795	6.65	58,127,056	8.56	60,045,852	8.84	---	---	679,408,248
1965	377,487,982	56.14	122,774,391	18.26	43,441,450	6.46	58,617,962	8.72	61,093,440	9.09	\$8,961,536	1.33%	672,376,761
1966	407,811,782	56.51	124,747,896	17.29	41,973,971	5.82	63,835,726	8.84	59,785,788	8.28	23,534,180	3.26	721,689,343

PARI-MUTUEL DATA FOR ALL TRACKS COMBINED
FOR ALL YEARS SINCE THE INCEPTION OF PARI-MUTUEL HARNESS RACING

YEAR	DAYS RACED	AVERAGE		HANDLE	AVERAGE		TOTAL REVENUE TO STATE	PURSES PAID
		ATTENDANCE	DAILY ATTENDANCE		DAILY HANDLE	HANDLE PER PATRON		
1940	59	126,238	2,139	\$ 1,703,538	\$ 28,874	\$ 13	\$ 101,517.79	No record
1941	125	388,919	3,111	7,020,702	56,166	18	398,676.22	\$ 375,000.00
1942	166	341,761	2,058	6,840,190	41,206	20	400,686.64	512,546.99
1943	32	94,518	2,953	2,767,610	86,488	29	164,264.61	141,123.03
1944	233	769,184	3,301	23,819,954	102,232	31	1,346,249.93	792,703.98
1945	276	1,196,773	4,336	42,539,320	154,128	36	2,357,309.23	1,175,450.94
1946	318	1,886,878	5,933	73,789,871	232,044	39	4,060,504.13	2,030,881.66
1947	317	2,179,788	6,876	81,786,370	258,001	38	4,498,956.27	2,166,718.99
1948	353	2,826,304	8,006	112,136,376	317,667	40	6,105,960.33	2,961,007.39
1949	372	3,225,841	8,671	120,946,670	325,125	37	7,427,338.51	3,446,741.86
1950	409	3,544,581	8,666	144,410,653	353,082	41	8,946,796.16	4,049,840.33
1951	439	4,218,672	9,609	190,908,421	434,871	45	12,060,198.22	5,180,131.19
1952	435	4,361,202	10,025	225,618,149	518,662	52	15,188,656.05	6,526,848.42
1953	506	5,096,114	10,071	272,375,230	538,291	53	18,460,818.38	7,975,180.91
1954	521	5,026,170	9,647	269,510,458	517,295	54	24,247,708.56	7,650,429.07
1955	522	5,055,851	9,686	282,835,009	541,830	56	25,640,225.10	8,081,952.01
1956	543	5,388,165	9,923	325,420,967	599,302	60	29,083,201.16	8,934,592.00
1957	572	6,137,990	10,731	387,757,390	677,898	63	32,767,271.49	10,268,442.20
1958	654	7,050,002	10,780	465,384,651	711,597	66	36,829,304.50	12,313,450.94
1959	696	7,212,110	10,362	488,860,700	702,386	68	39,034,186.51	12,646,121.61
1960	690	7,380,263	10,696	505,663,411	732,846	69	39,981,163.61	13,180,826.37
1961	703	7,491,639	10,657	516,790,071	735,121	69	40,763,357.43	13,362,989.89
1962	721	7,523,273	10,434	530,109,244	735,242	70	45,963,709.35	14,021,471.08
1963	809	8,330,669	10,297	588,105,103	726,953	71	55,786,643.27	15,476,715.10
1964	825	9,315,603	11,292	679,408,248	823,525	73	65,532,857.01	17,224,524.90
1965	914	9,015,472	9,864	672,376,761	735,642	75	64,785,005.09	17,487,665.68
1966	989	9,391,993	9,496	721,689,343	729,716	77	70,604,742.13	20,159,717.33